

115

A

別 冊



No. 1

(A 問題 22)

A



B



No. 2

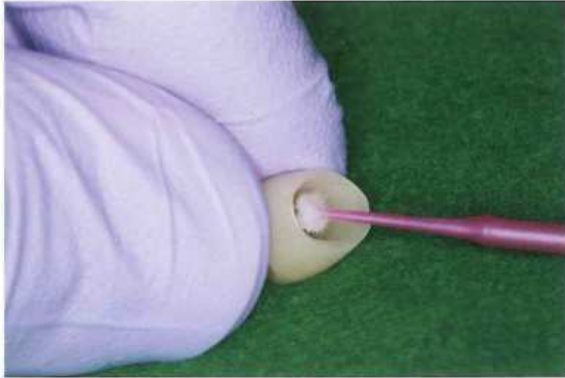
(A 問題 23)

A



B

ア



イ



ウ



エ



オ



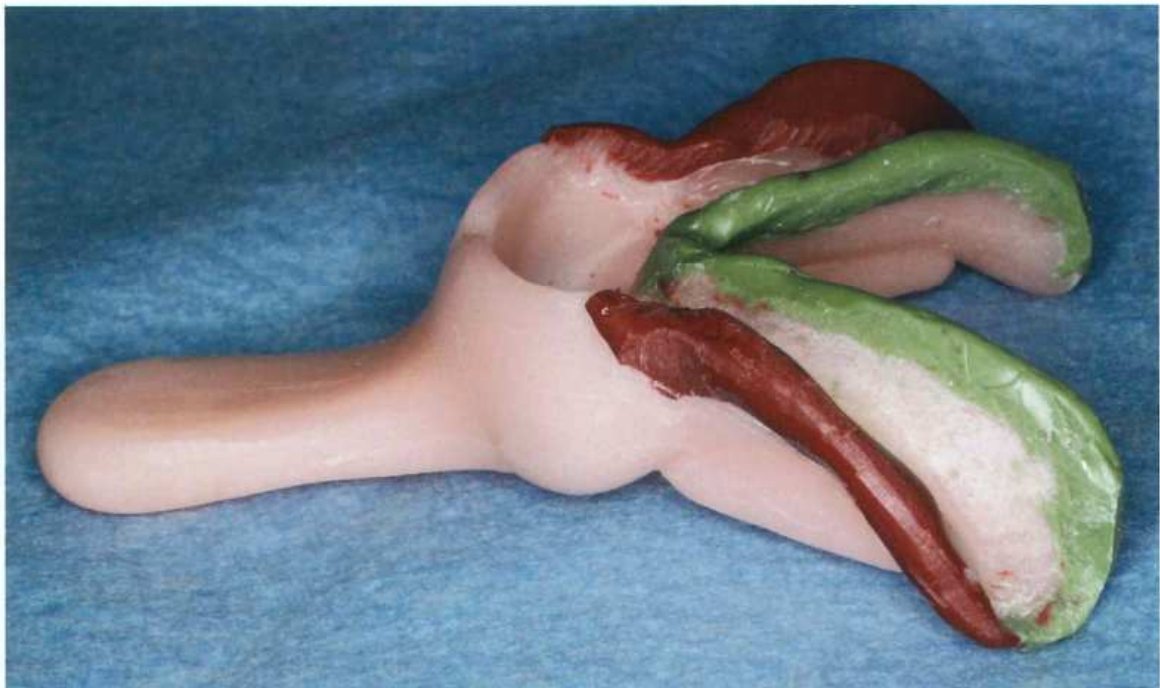
No. 3

(A 問題 24)

A



B



余 白

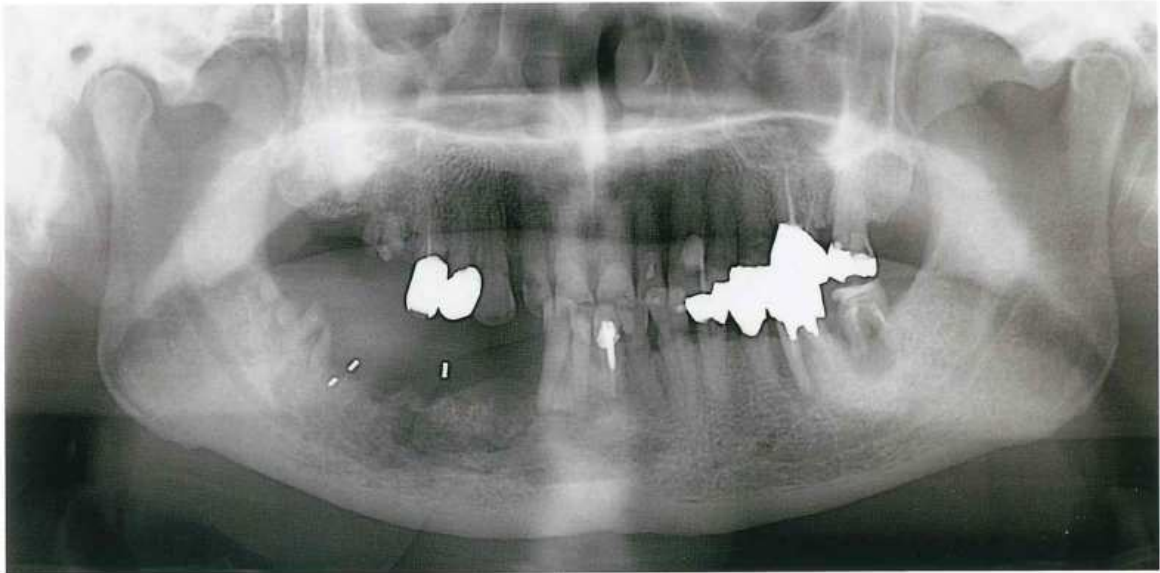
No. 4

(A 問題 26)

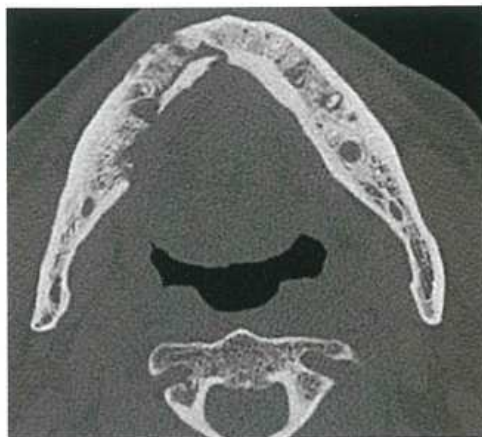
A



B



C

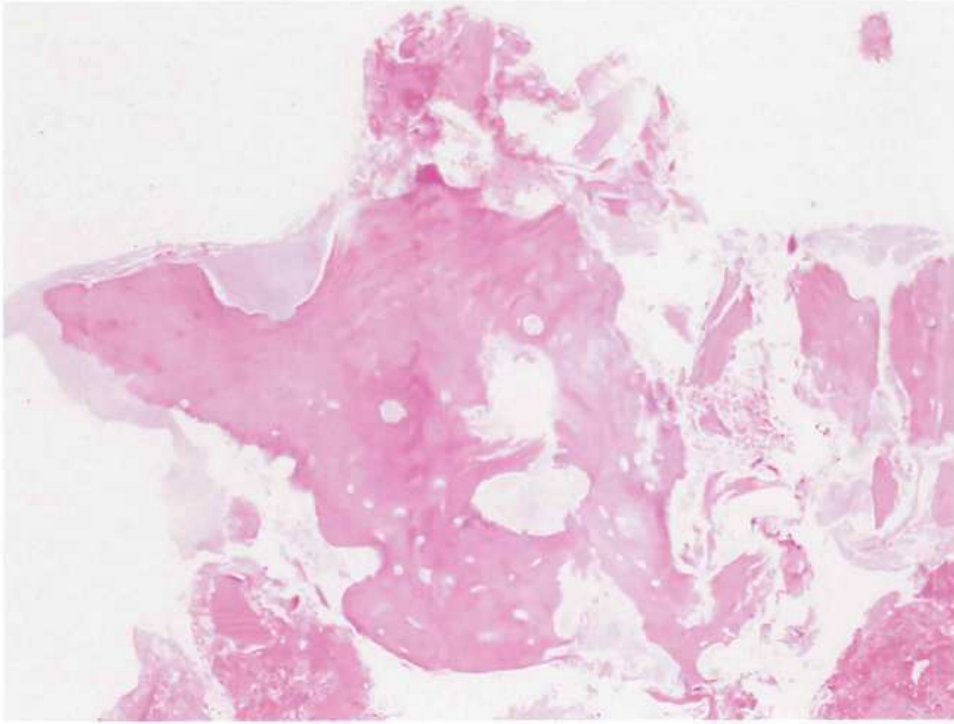




No. 4

(A 問題 26)

D





No. 6

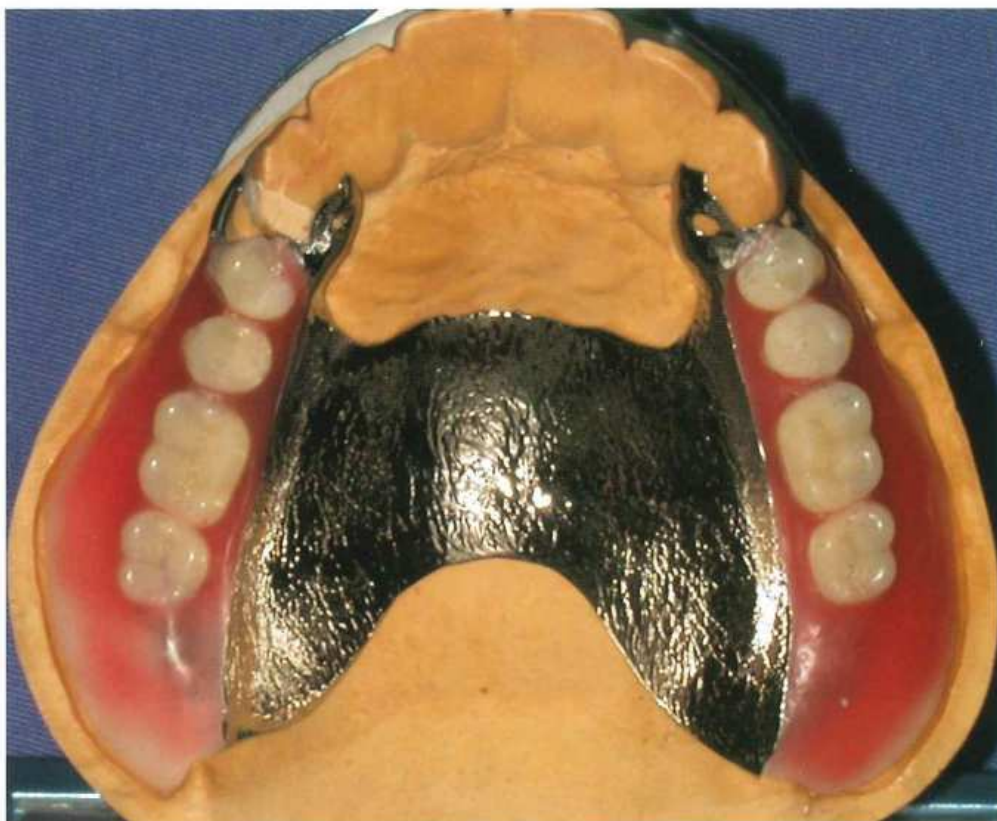
(A 問題 31)



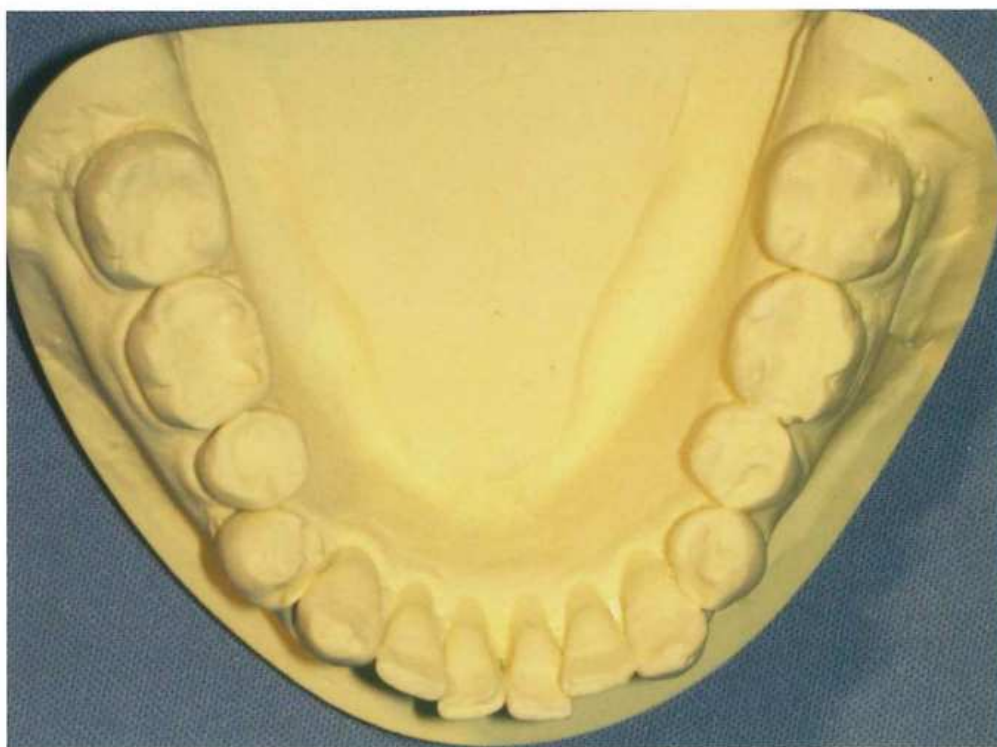
No. 7

(A 問題 33)

A



B



余 白

No. 8

(A 問題 36)

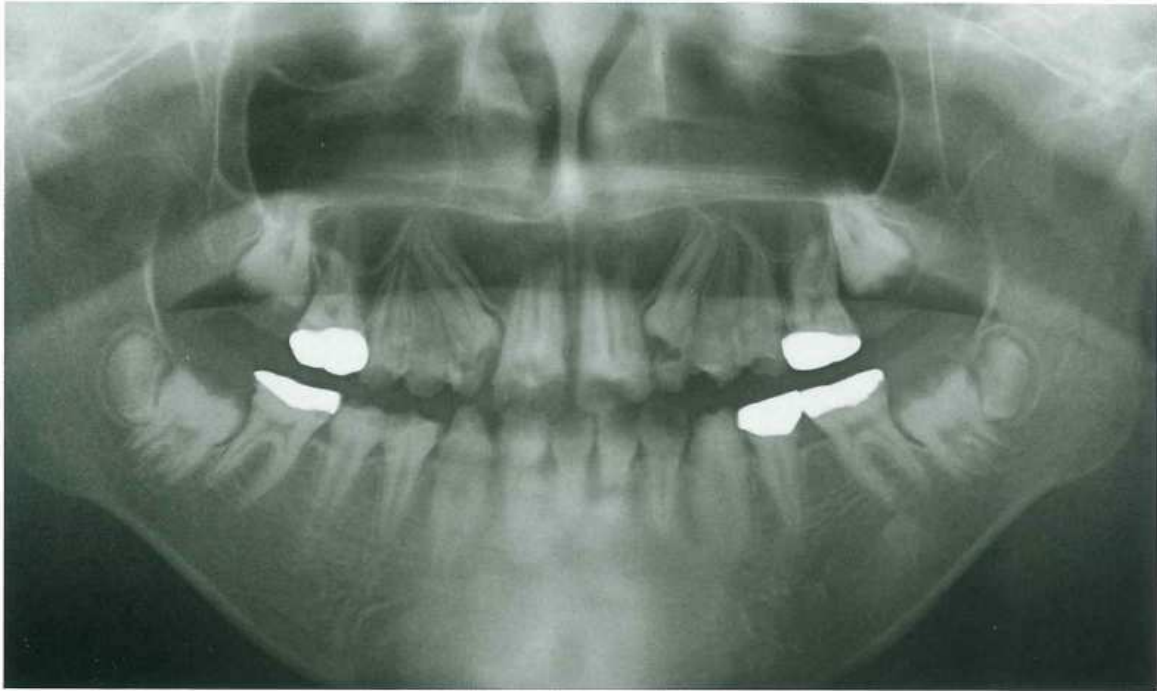
A



No. 8

(A 問題 36)

B



No. 9

(A 問題 37)

A



B







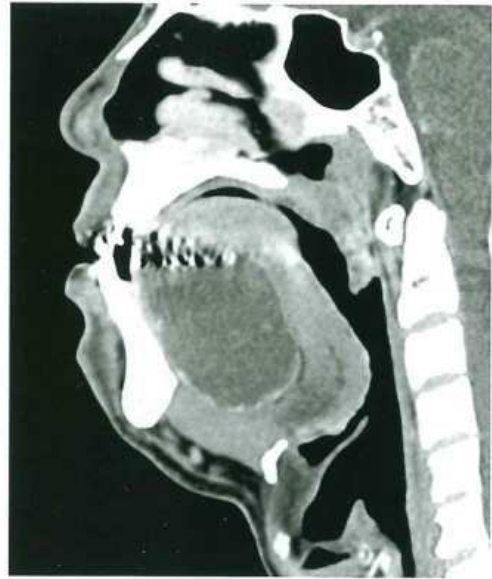
No. 11

(A 問題 41)

A

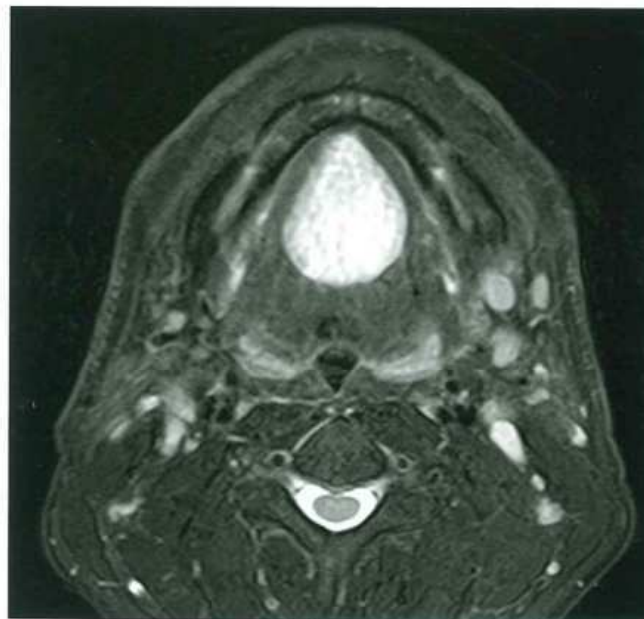


横断像



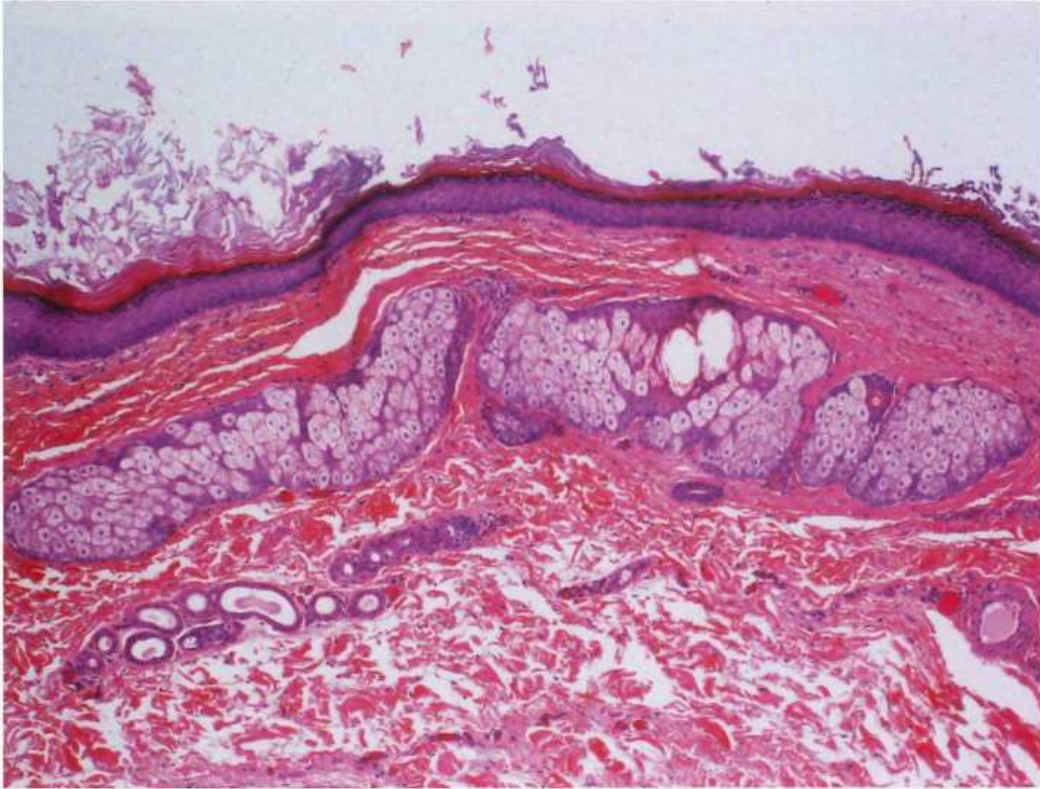
矢状断像

B



脂肪抑制 T2 強調横断像

C



No. 12

(A 問題 43)

A



No. 12

(A 問題 43)

B



No. 13

(A 問題 45)

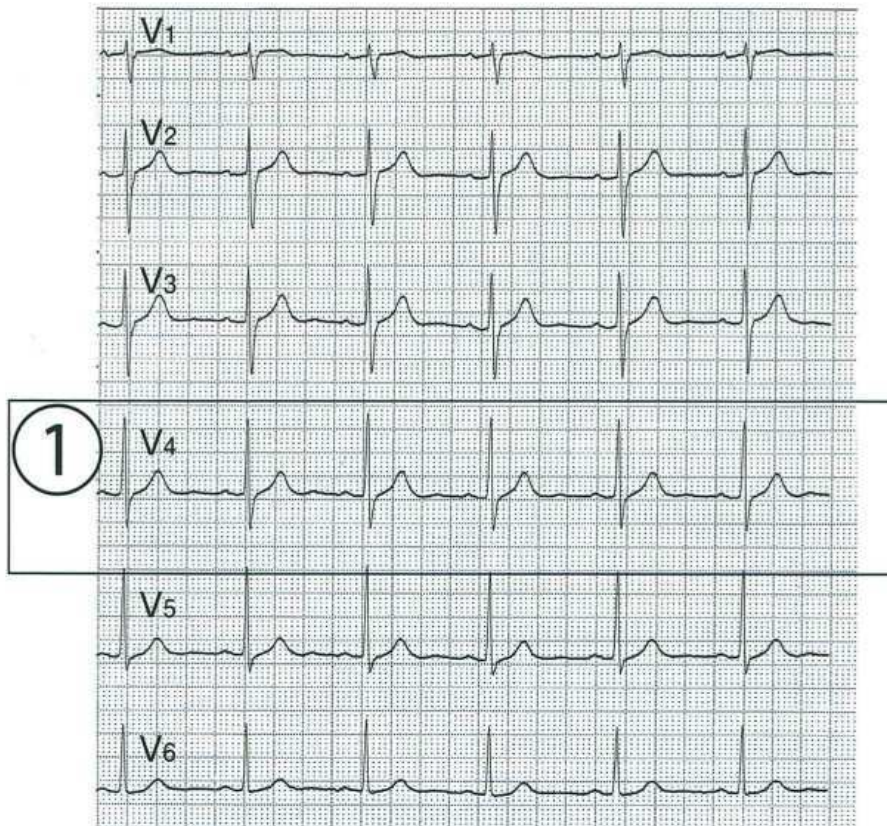
A



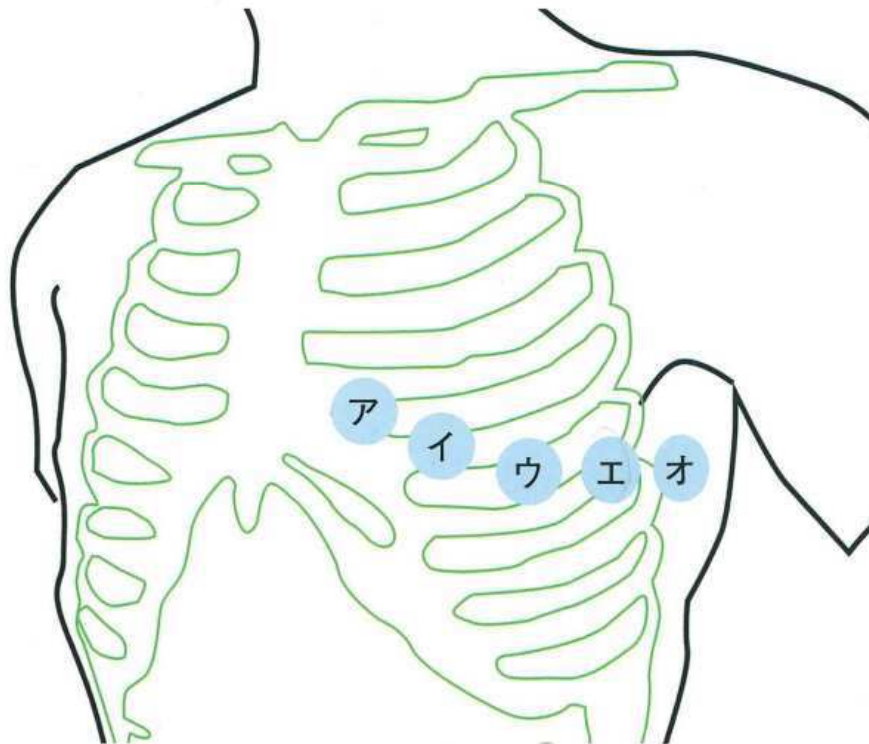
B



A



B



No. 15

(A 問題 49)

A



B

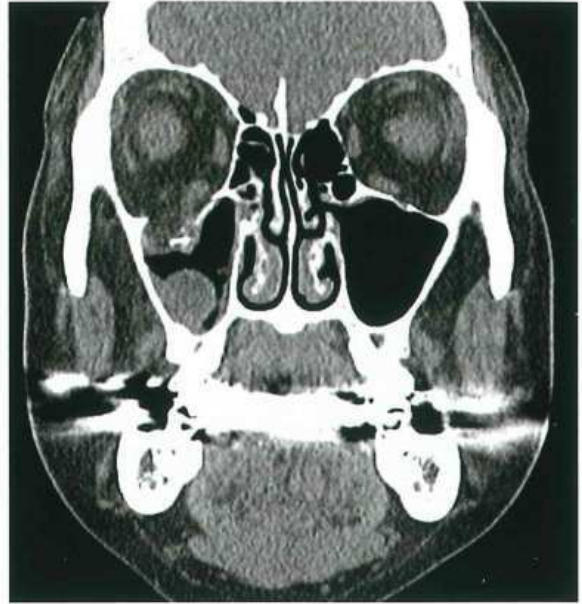




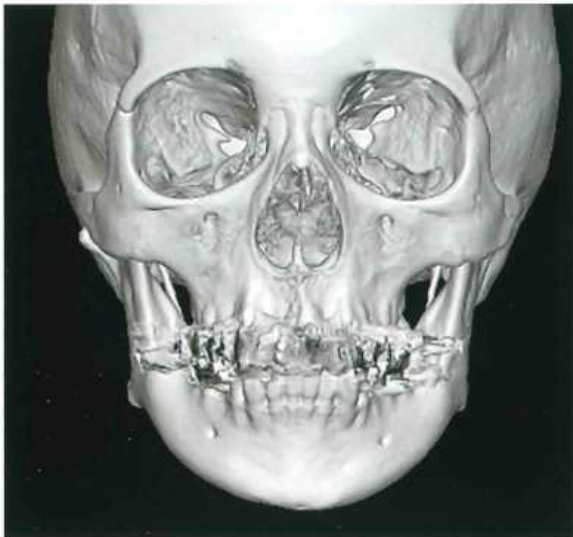
C



骨条件像



軟組織条件像



3D-CT 像

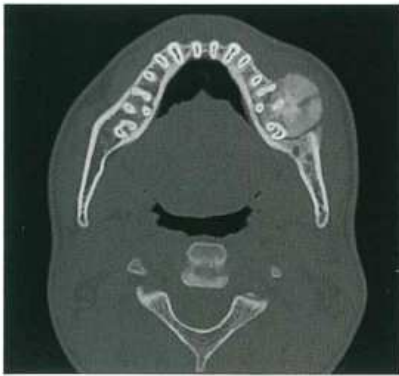
No. 16

(A 問題 50)

A



B



横断像

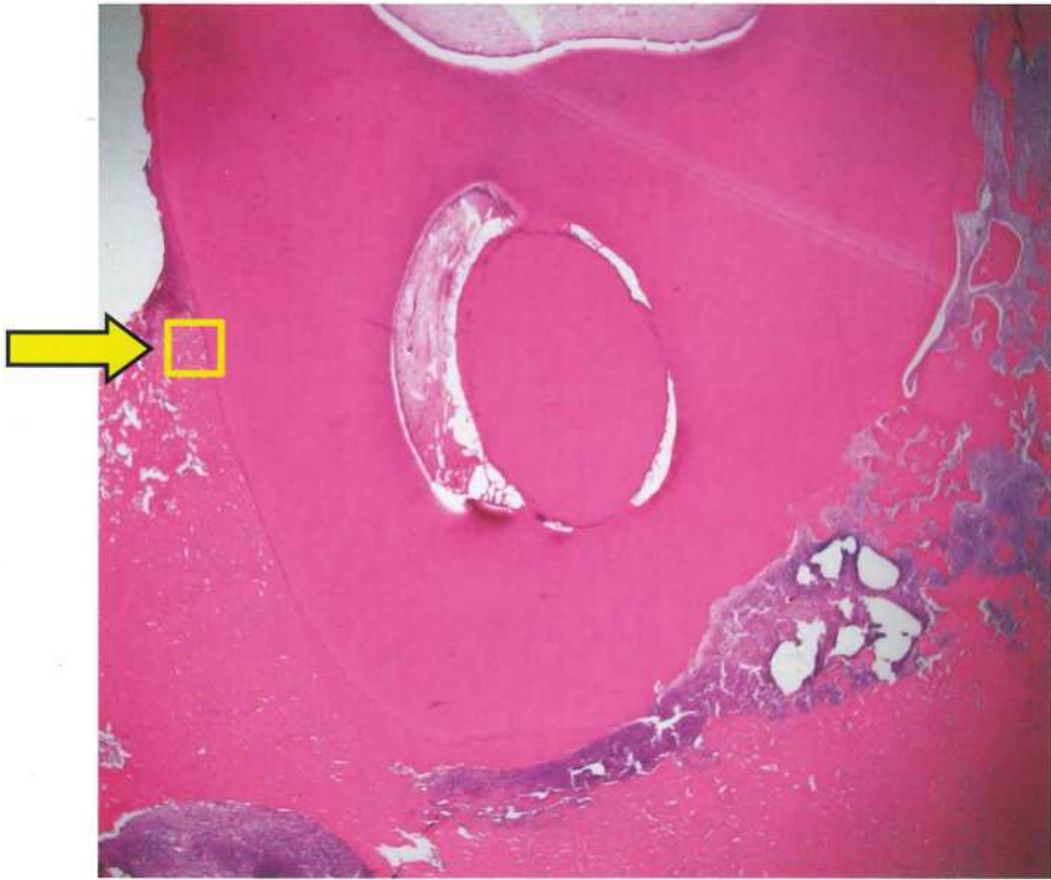


冠状断像

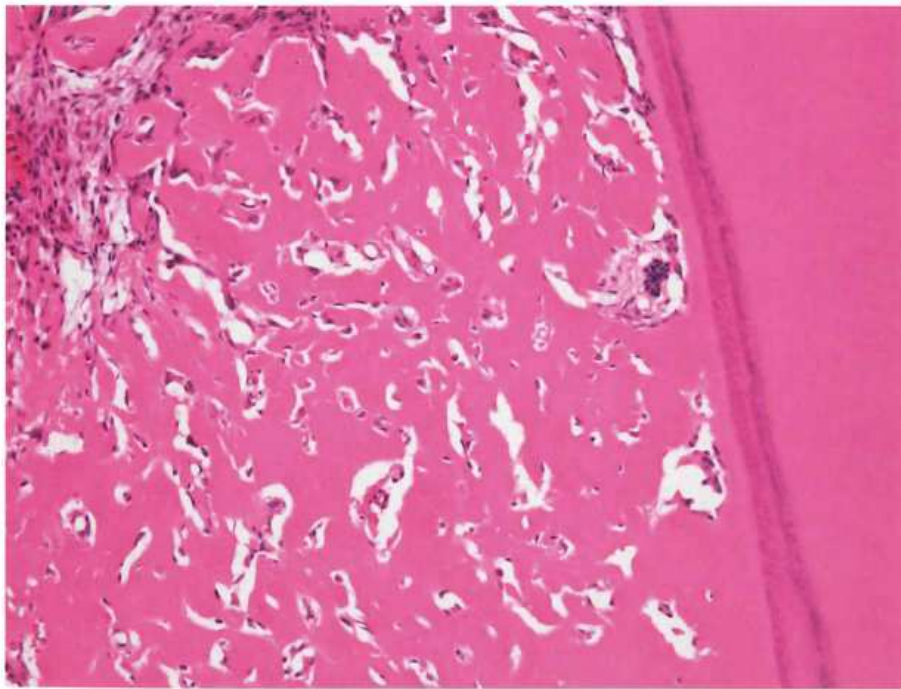
C



D



E



No. 17

(A 問題 51)

A



B



A



B



No. 19

(A 問題 58)

A



B



No. 19

(A 問題 58)

C



No. 20

(A 問題 63)

A



B



C





No. 21

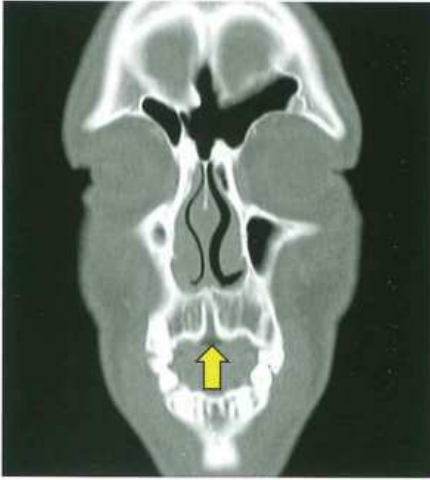
(A 問題 64)



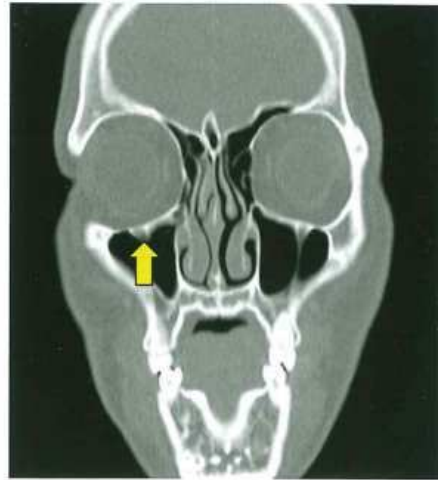
No. 22

(A 問題 66)

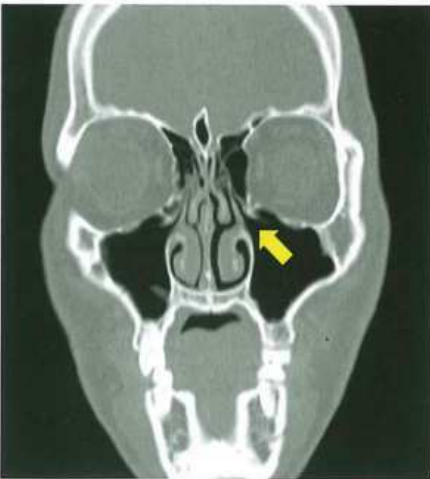
ア



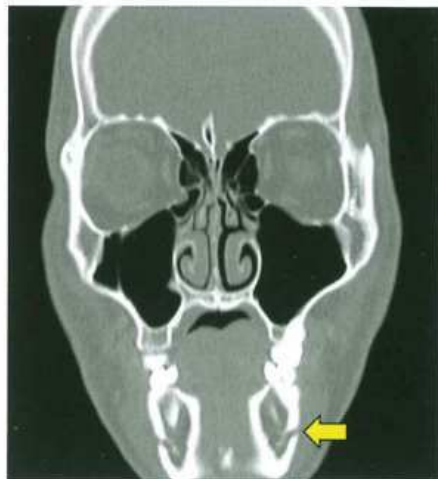
イ



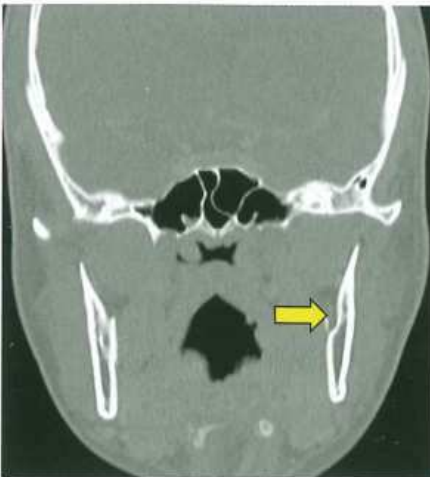
ウ

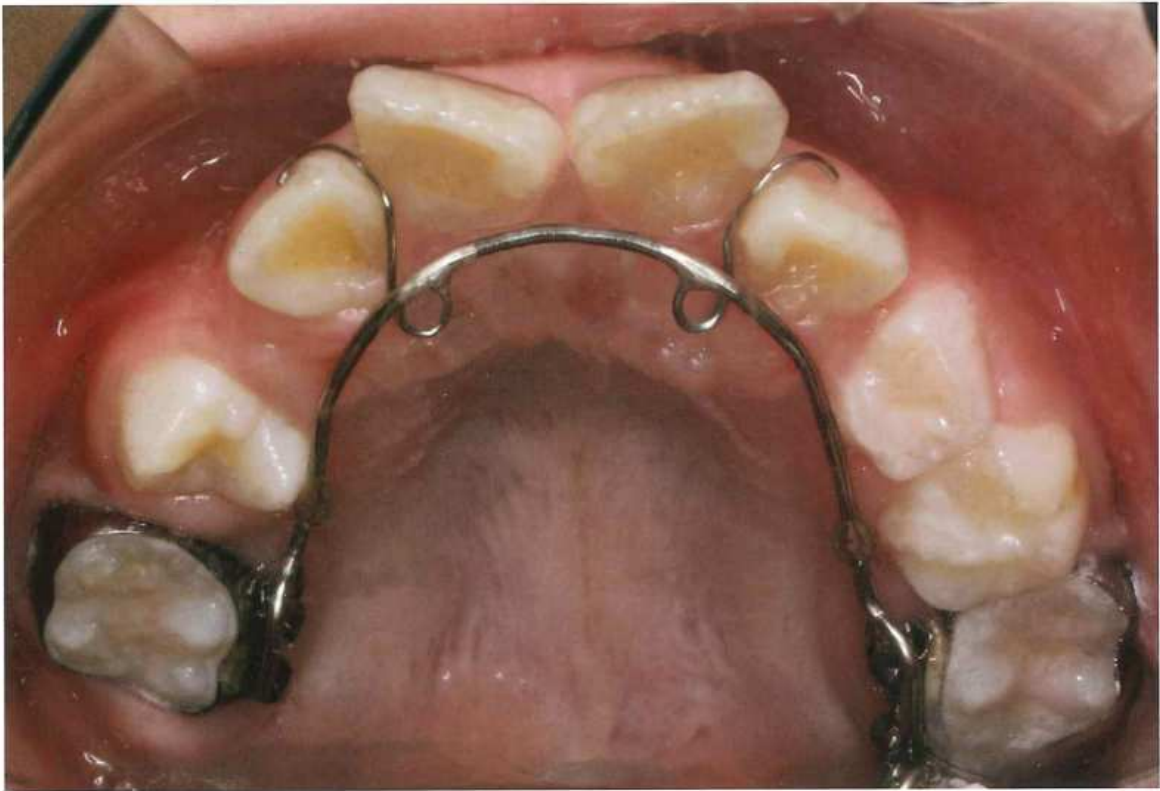


エ



オ





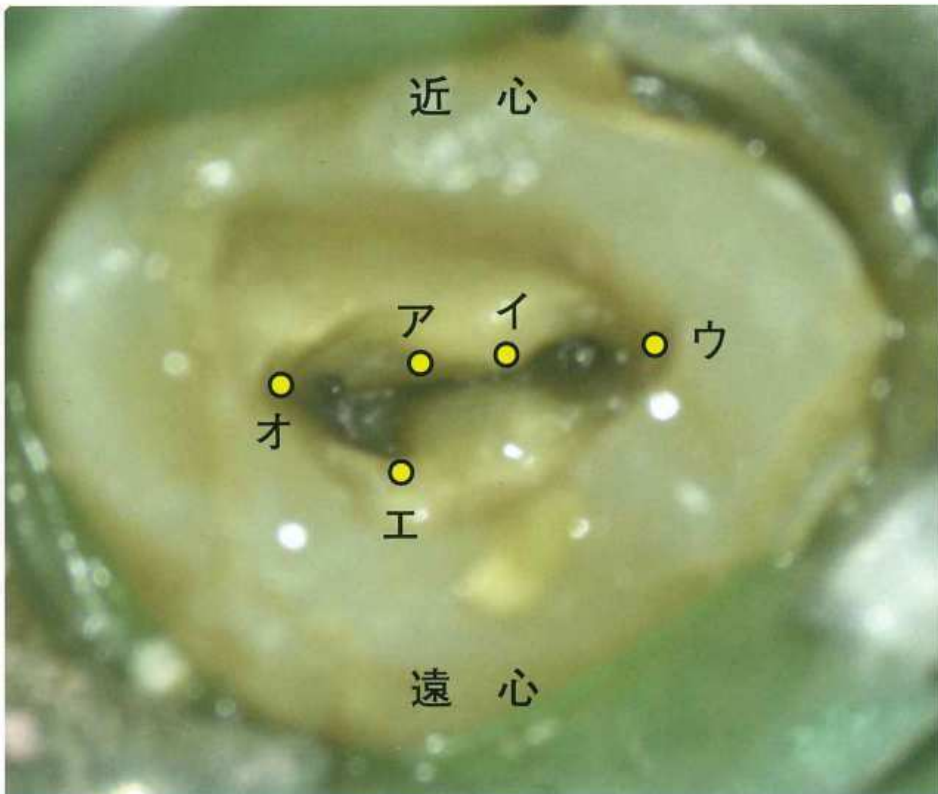
No. 24

(A 問題 68)

A



B

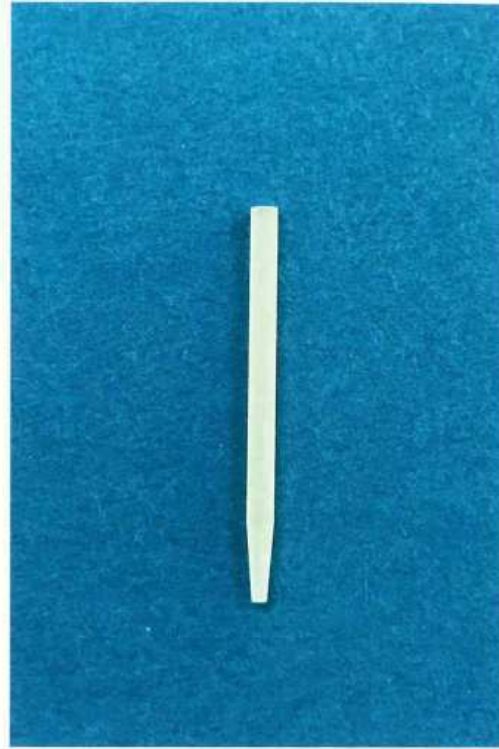


余 白

No. 25

(A 問題 69)

A



B



No. 25

(A 問題 69)

C

ア



イ



ウ



エ



オ



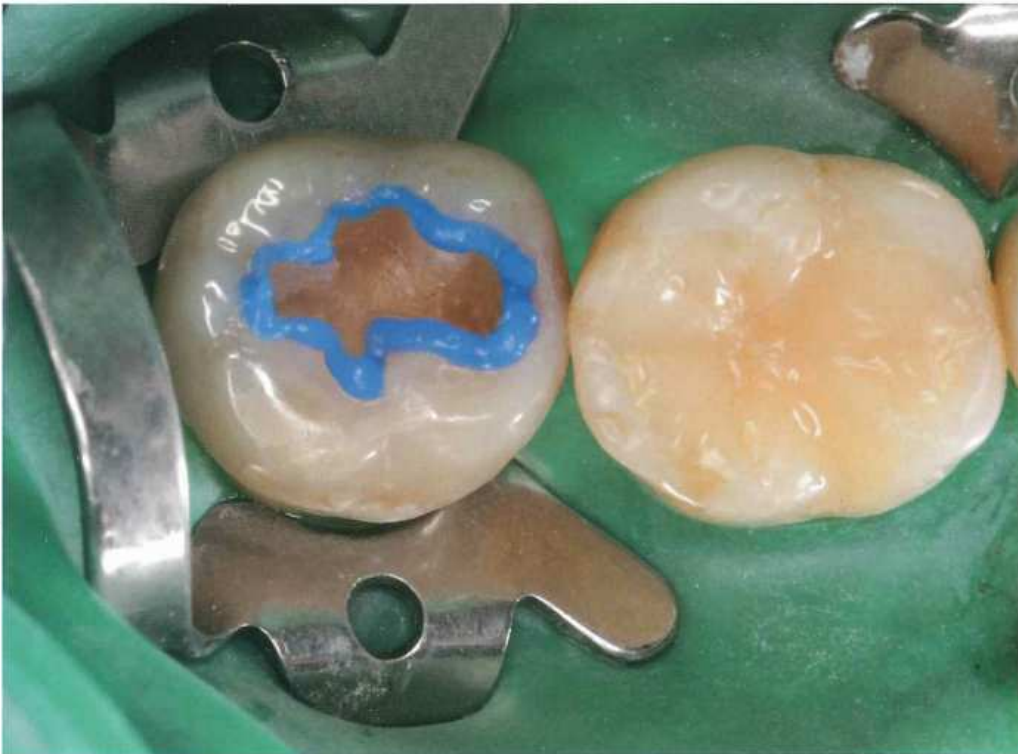
No. 26

(A 問題 70)

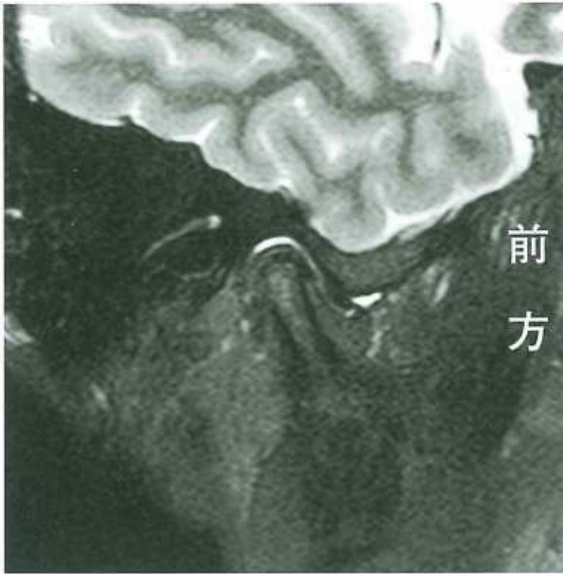
A



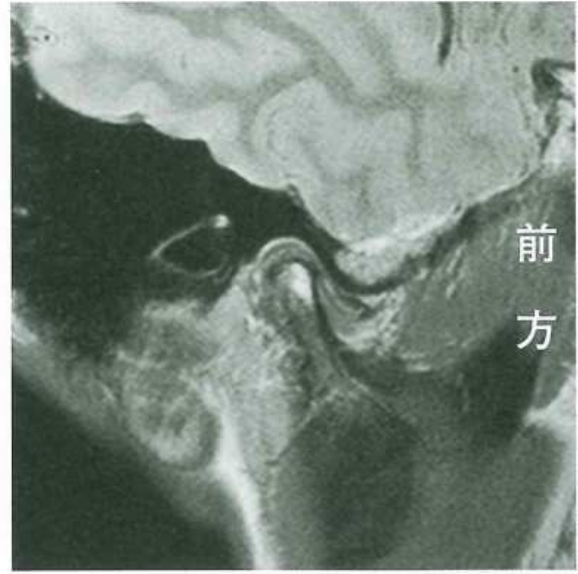
B



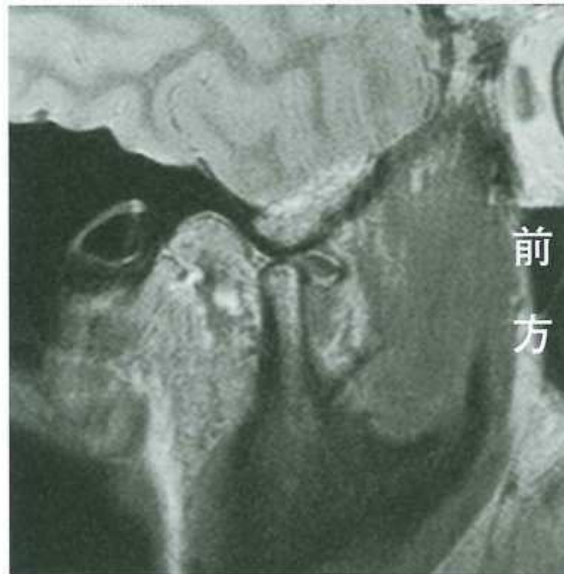




閉口時脂肪抑制T2強調像



閉口時プロトン密度強調像



開口時プロトン密度強調像

No. 28

(A 問題 77)

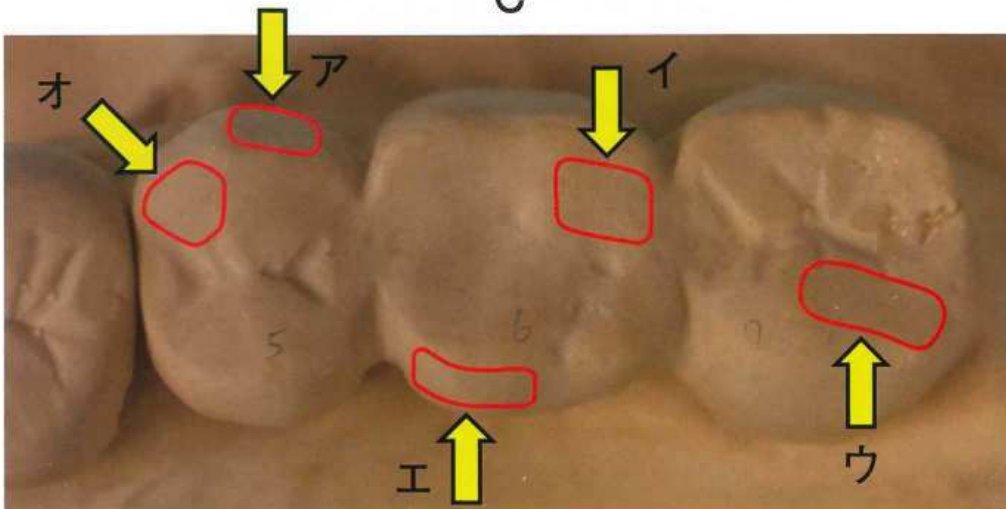
A



B



C



ア



イ



ウ



エ



オ



No. 30

(A 問題 83)

A



B



C



No. 31

(A 問題 85)

A



B



C



No. 32

(A 問題 86)

A



B

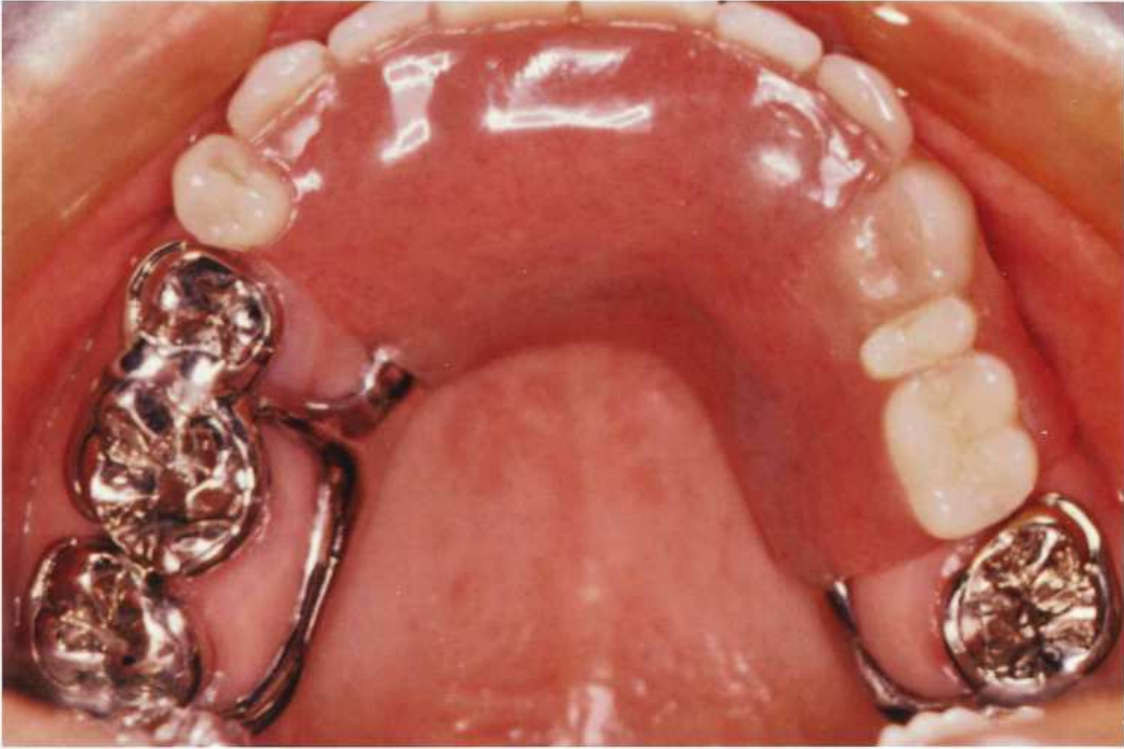


余 白

No. 33

(A 問題 87)

A



B





No. 33

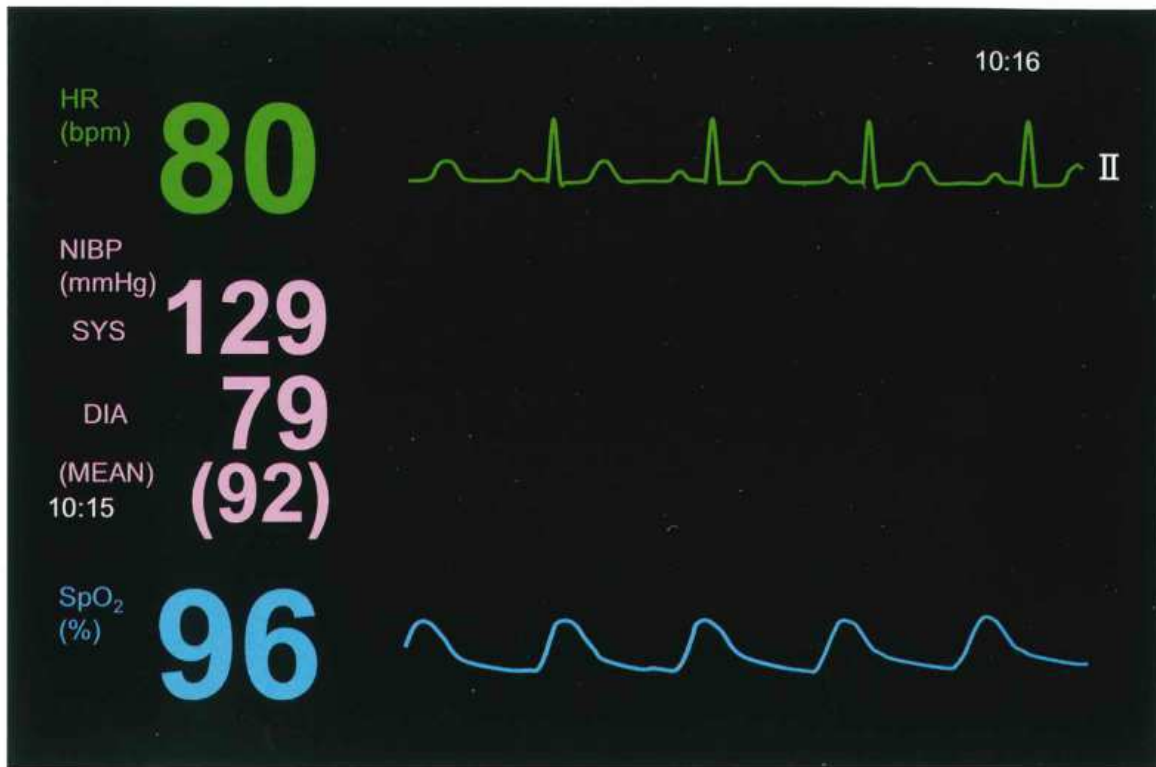
(A 問題 87)

C



D





No. 35

(A 問題 89)

A



B



No. 36

(A 問題 90)

A



B

ア



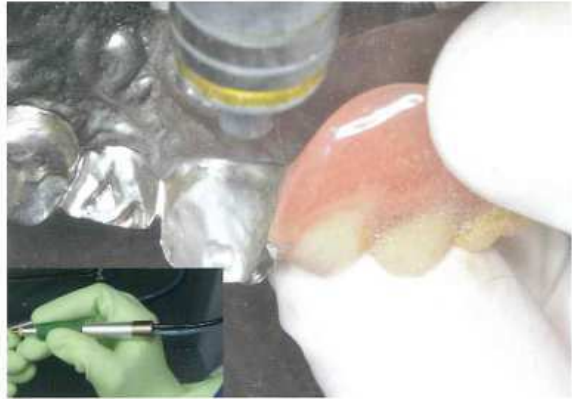
イ



ウ



エ



オ

