

112

D

別 冊

No. 1

(D 問題11)

A



B



C



No. 2

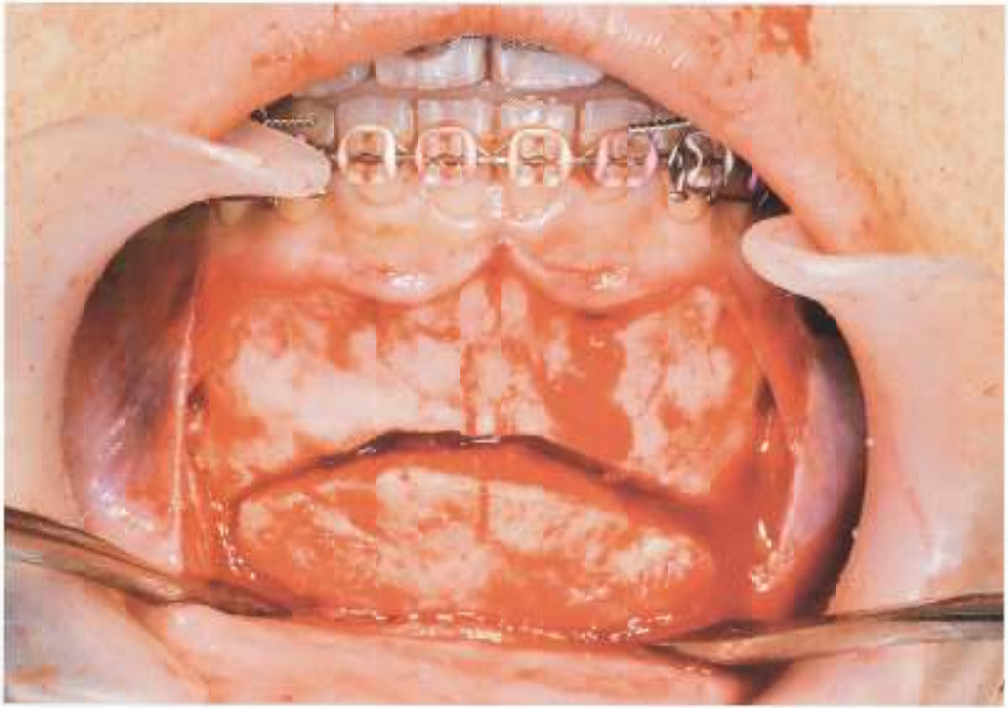
(D 問題 35)



No. 3

(D 問題 45)





No. 5

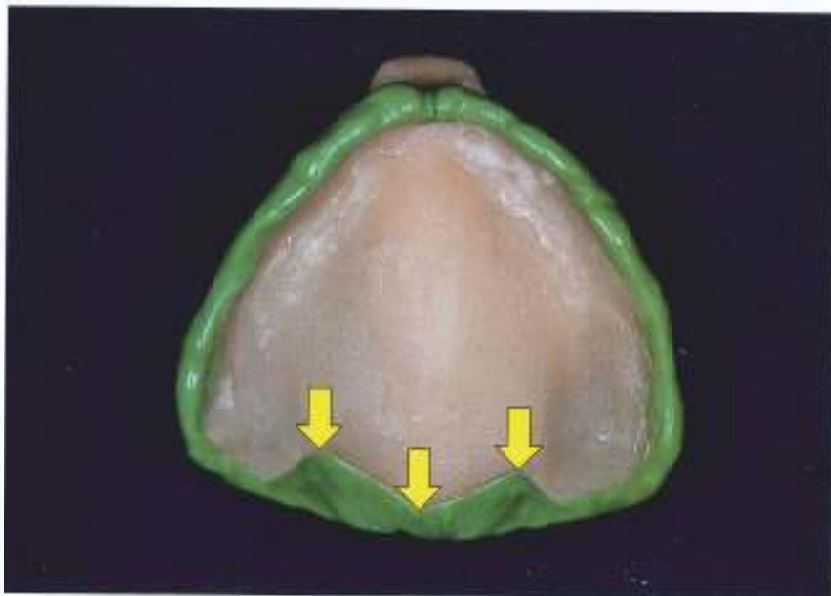
(D 問題 50)

A



B











No. 9

(D 問題 58)

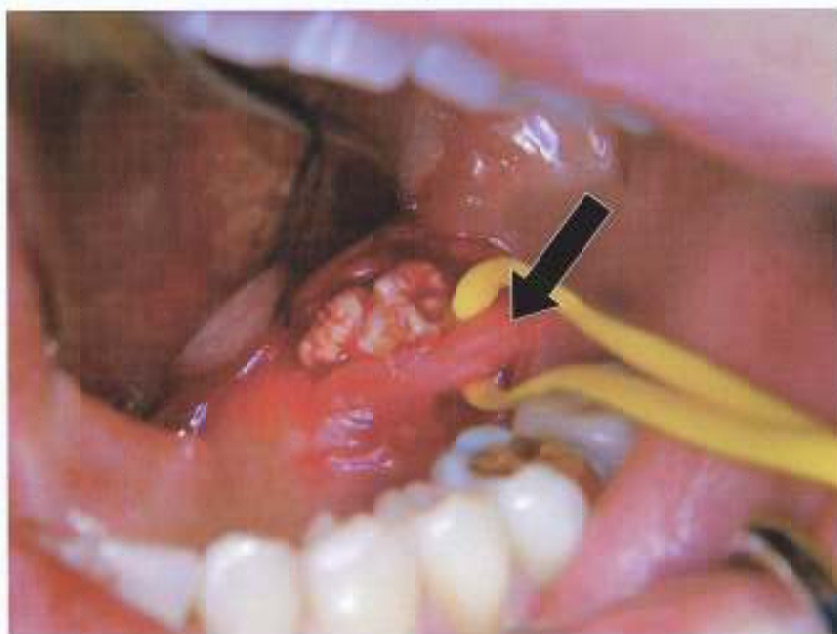




A



B



A



B





No. 13

(D 問題 66)

A



B



No. 14

(D 問題 67)

A



B





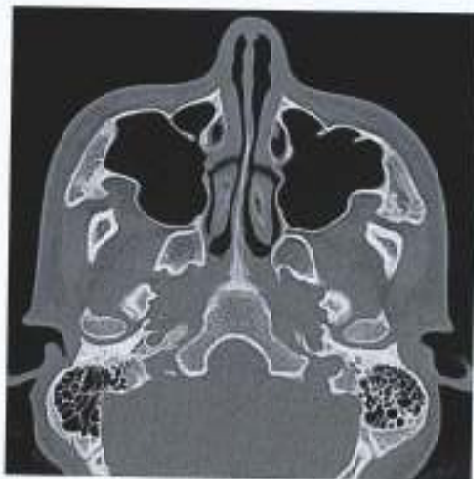
No. 15

(D 問題 68)

A



B



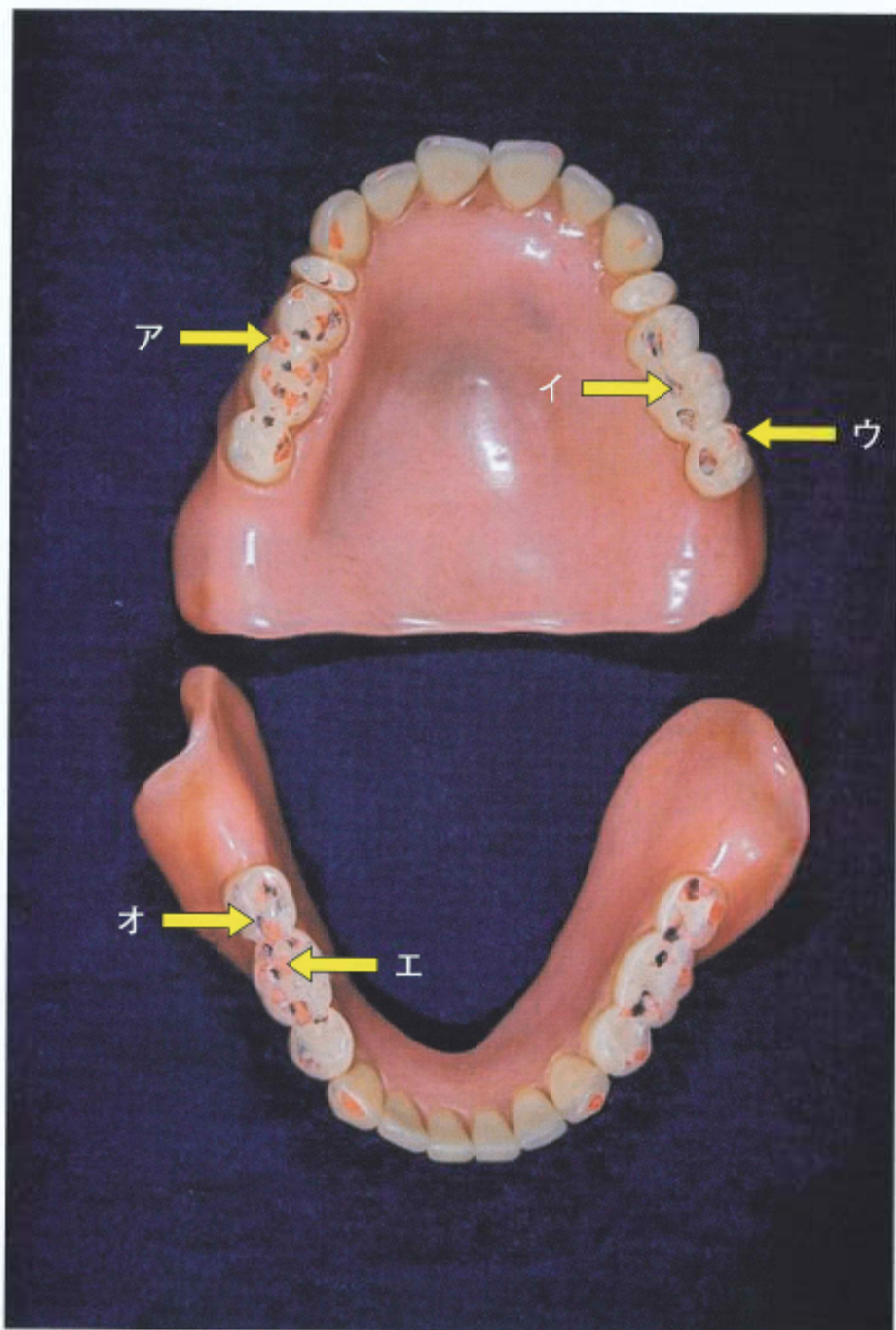
横断像



矢状断像



3D-CT 像







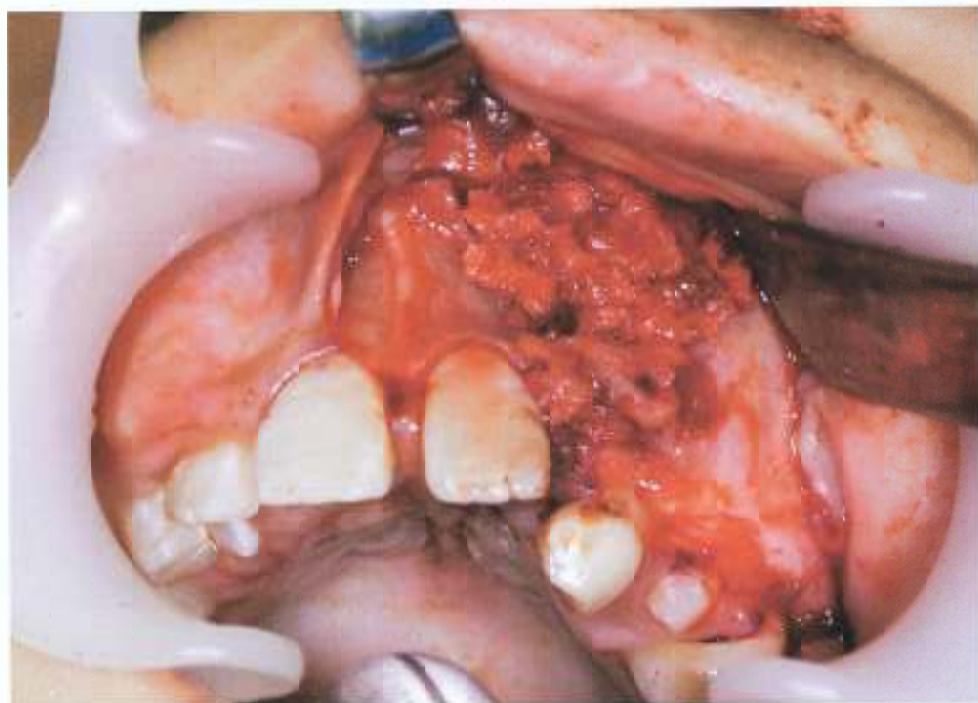
No. 18

(D 問題 71)

A



B





余 白

No. 20

(D 問題 73)

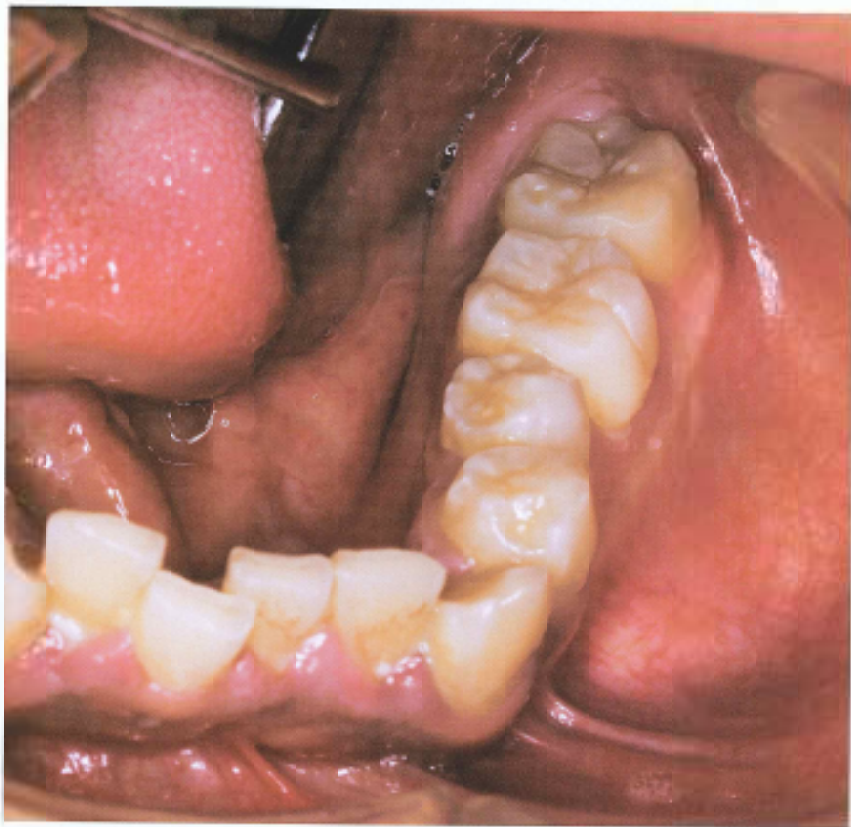




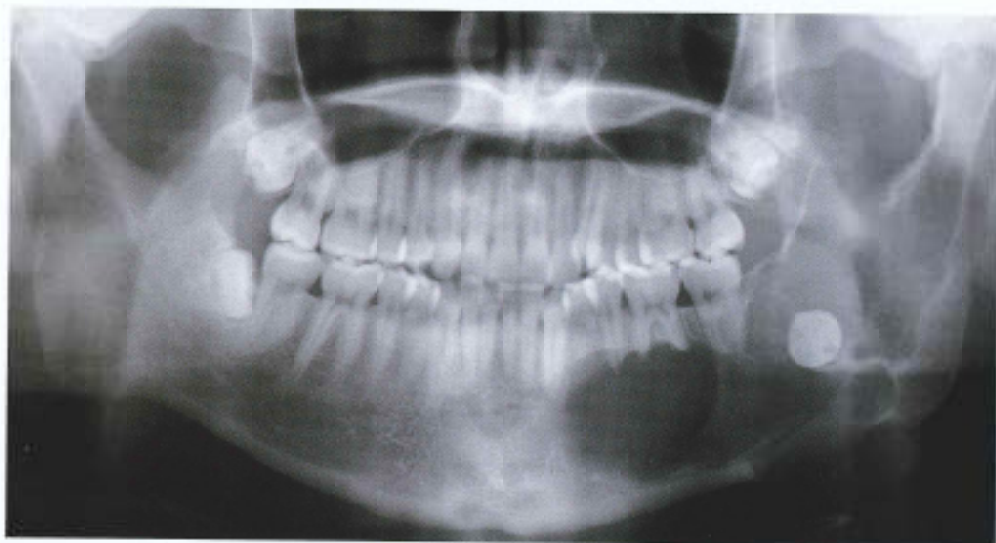


余 白

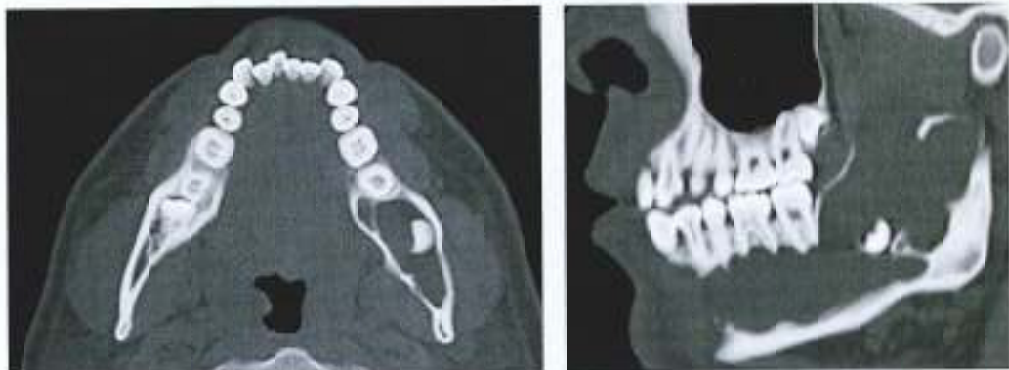
A



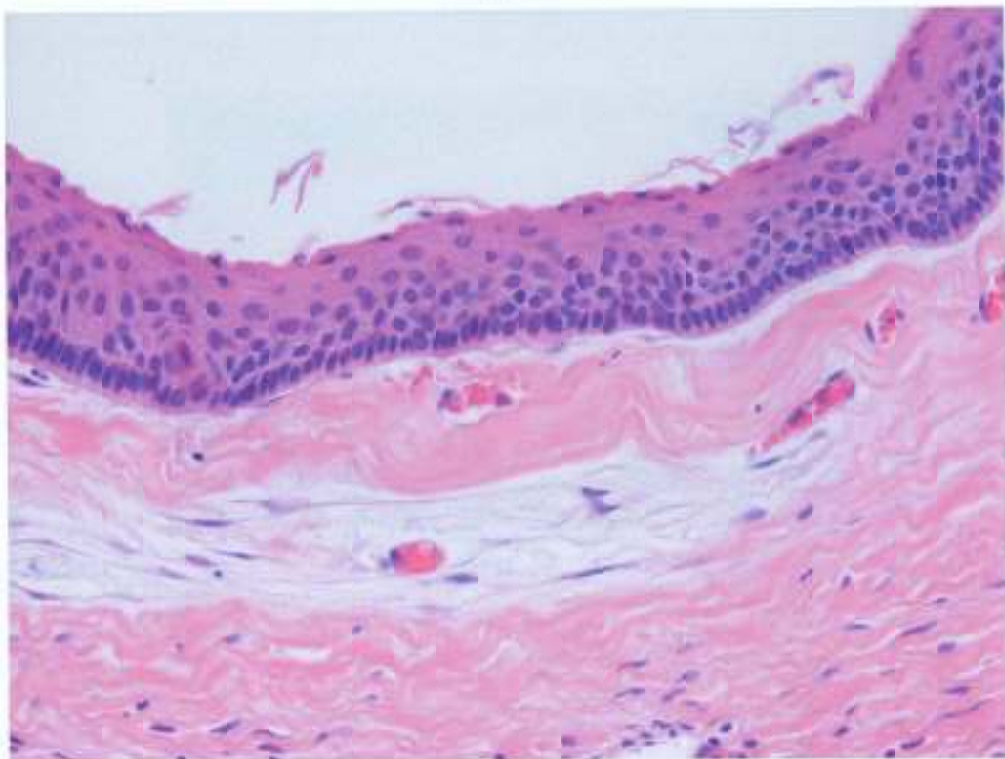
B



C



D





調整前



調整後

No. 24

(D 問題 77)

A



B





No. 25

(D 問題 78)

A



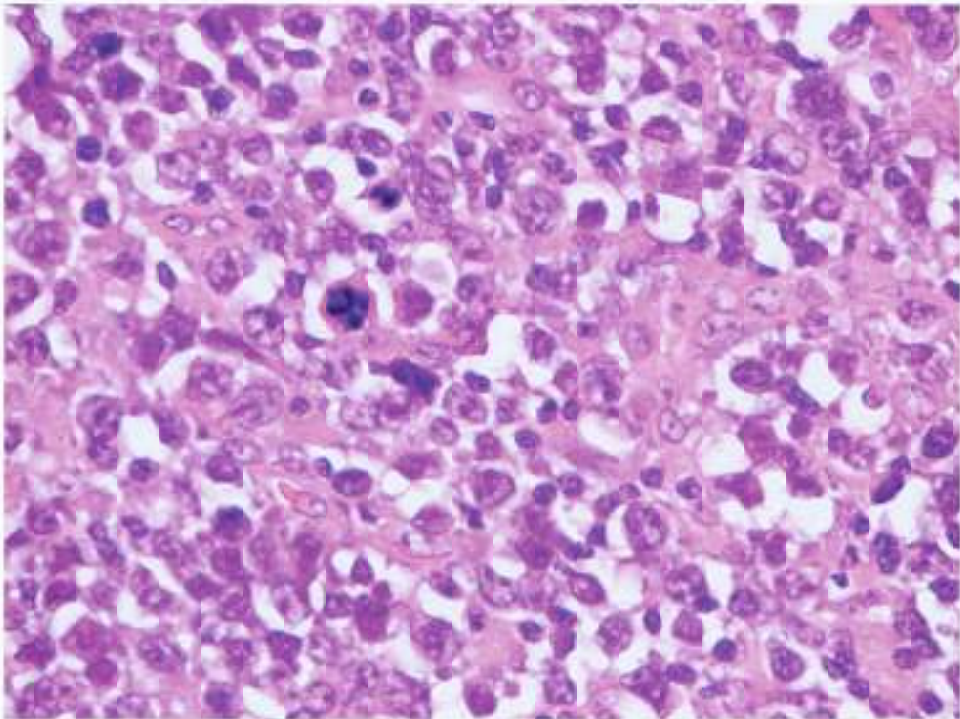
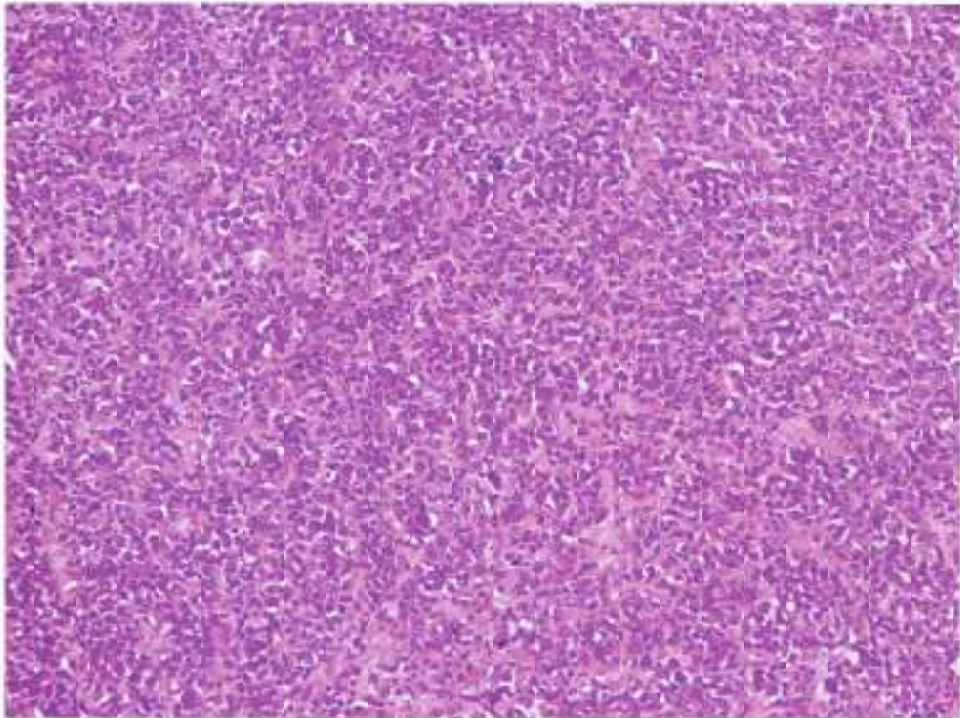
B



C



D





No. 26

(D 問題 79)

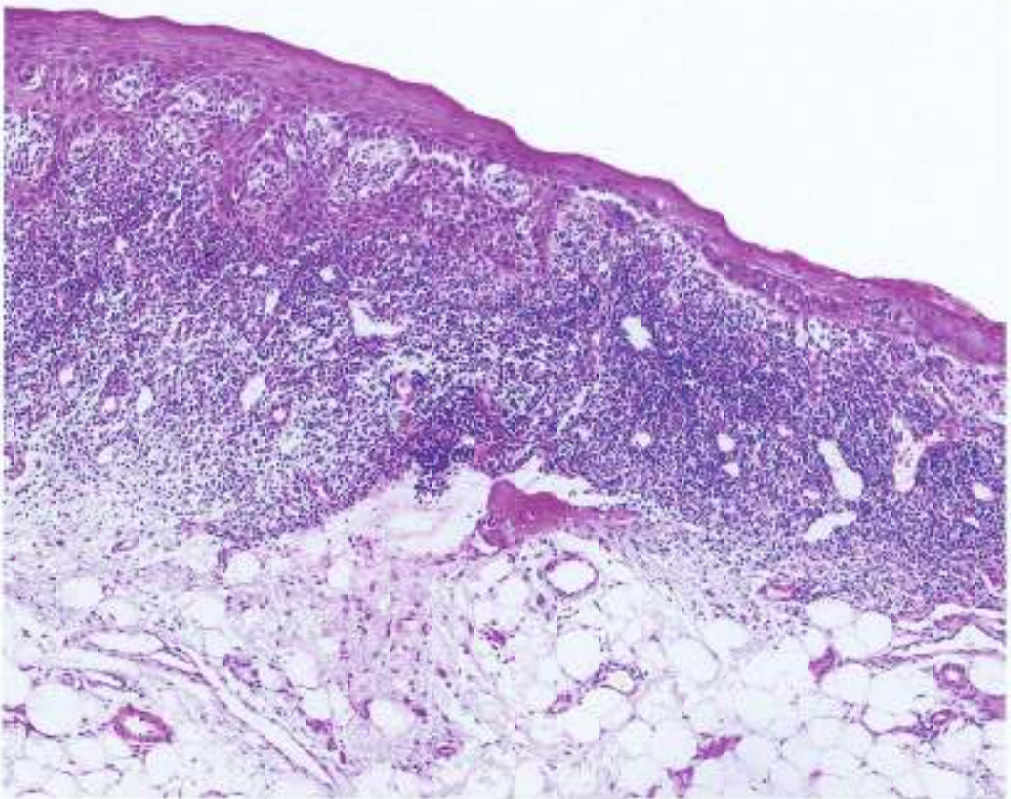
A



No. 26

(D 問題 79)

B





変化前



変化後





義歯装着時



義歯撤去時

A



B



余 白

No. 30

(D 問題 83)

A



(ミラー像)



(ミラー像)

B





No. 31

(D 問題 84)

A



B





No. 33

(D 問題 86)

A



B



余 白

No. 34

(D 問題 87、88)

A



B

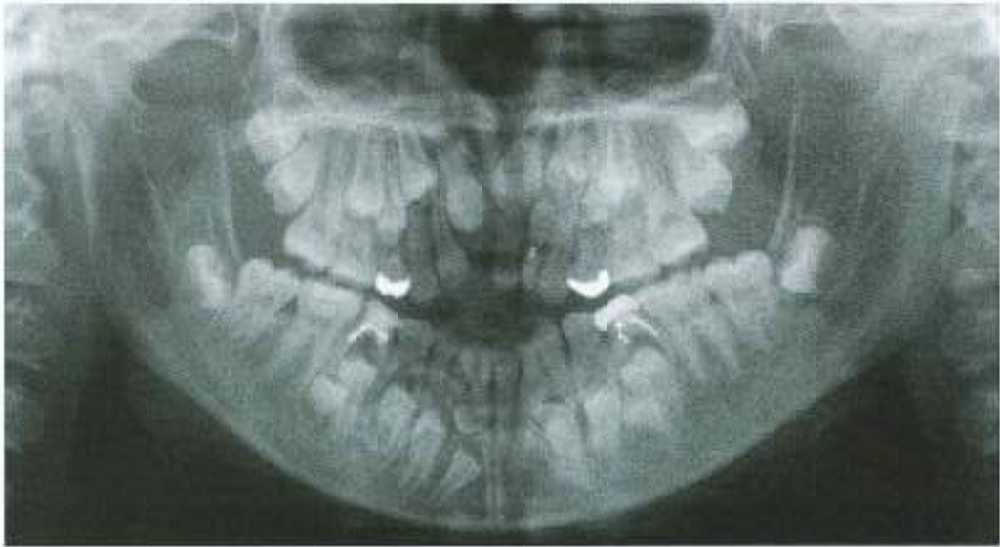




No. 34

(D 問題 87,88)

C



No. 35

(D 問題 89)

A

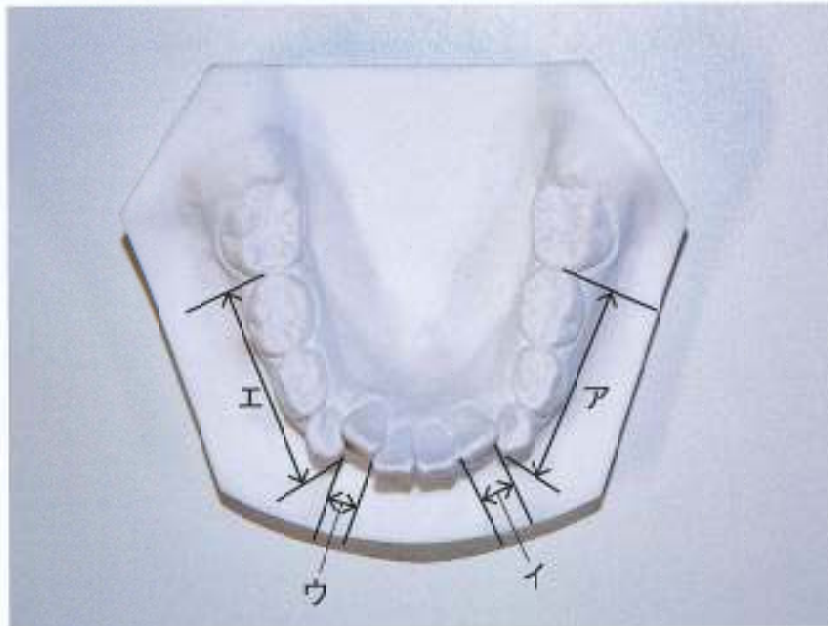
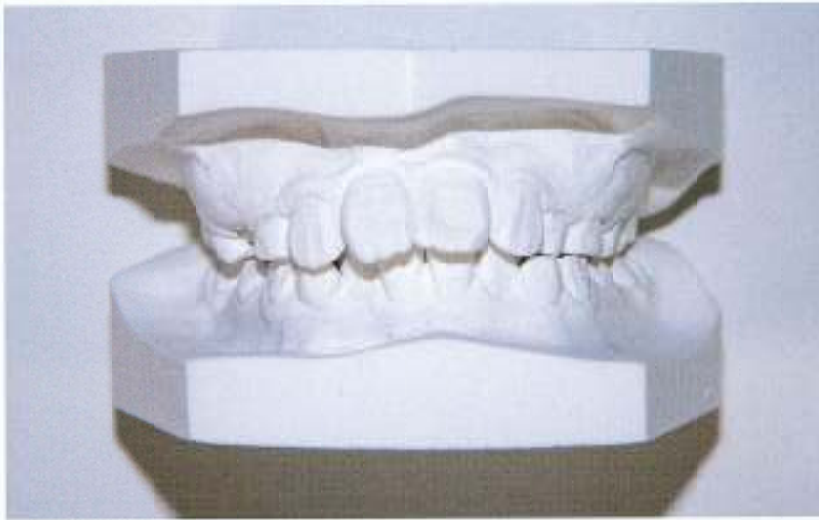


B



C





ア 21.6 mm イ 6.4 mm ウ 5.6 mm エ 23.4 mm

下顎左側側切歯の歯冠幅径：6.6 mm

下顎左側中切歯の歯冠幅径：6.0 mm

下顎右側中切歯の歯冠幅径：6.0 mm

下顎右側側切歯の歯冠幅径：6.6 mm