

114

A

別 冊

No. 1

(A 問題 17)





No. 3

(A 問題 23)

A



B



(ミラー像)

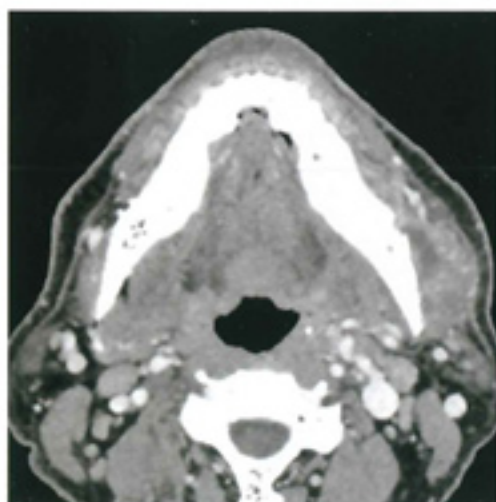
C



A



B



造影 CT 横断像

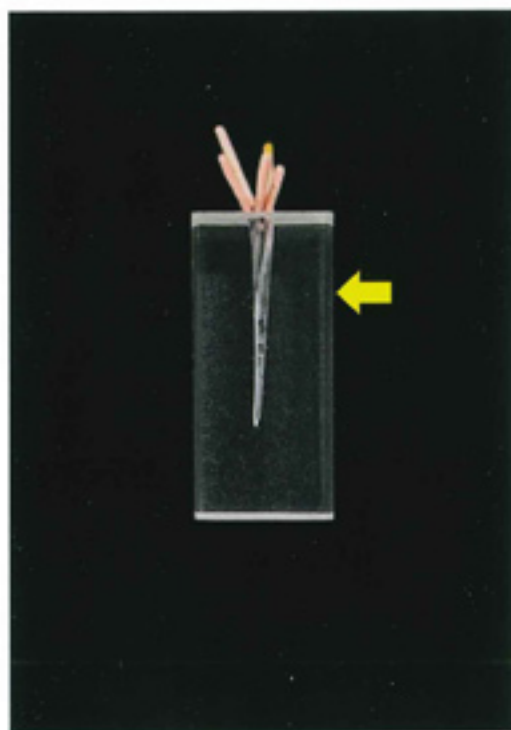


骨表示 CT 横断像

No. 5

(A 問題 25)

A

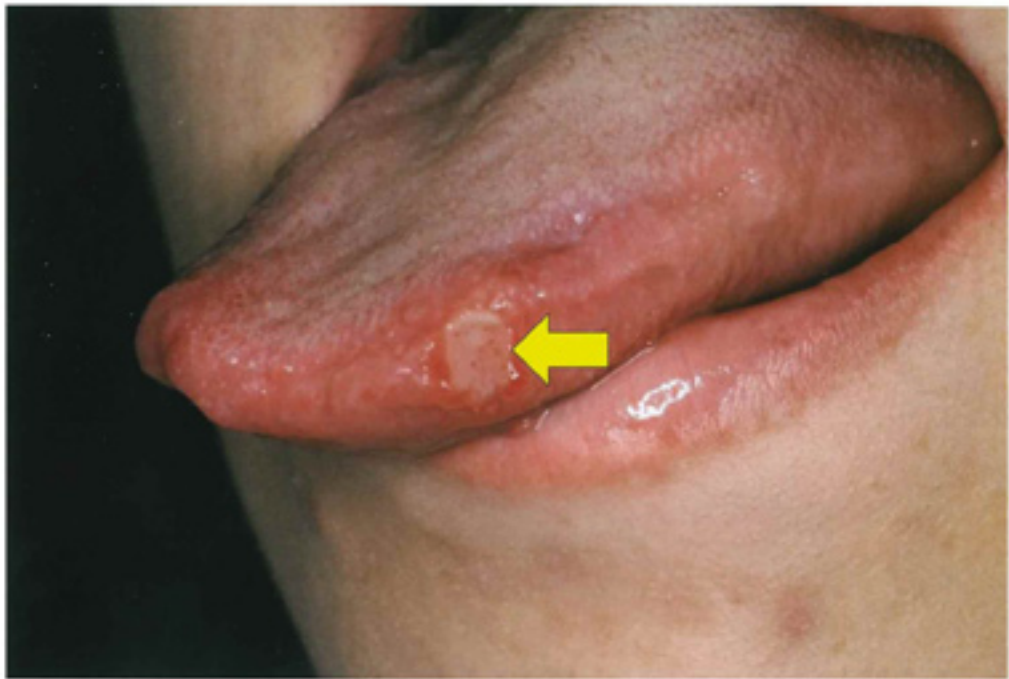


B



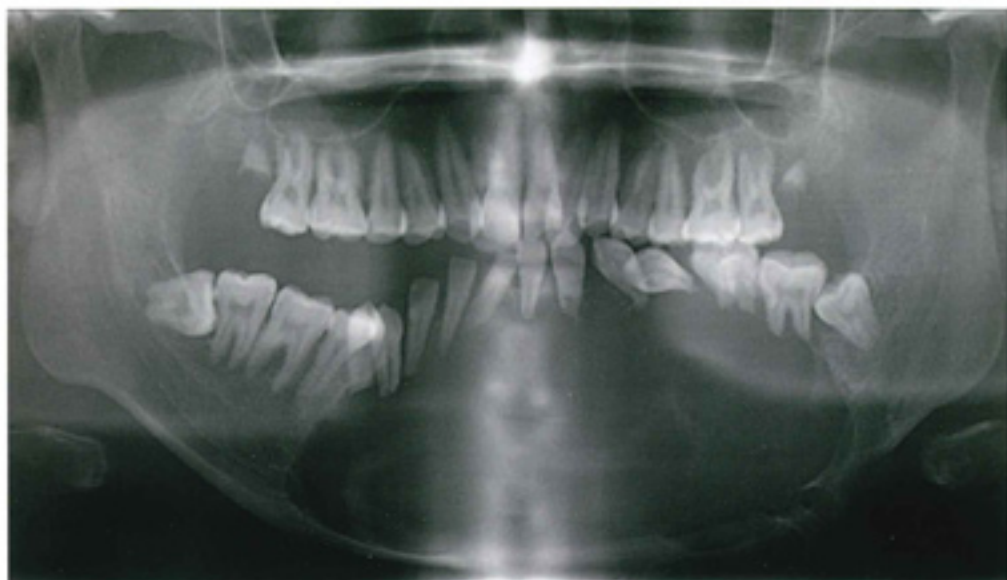




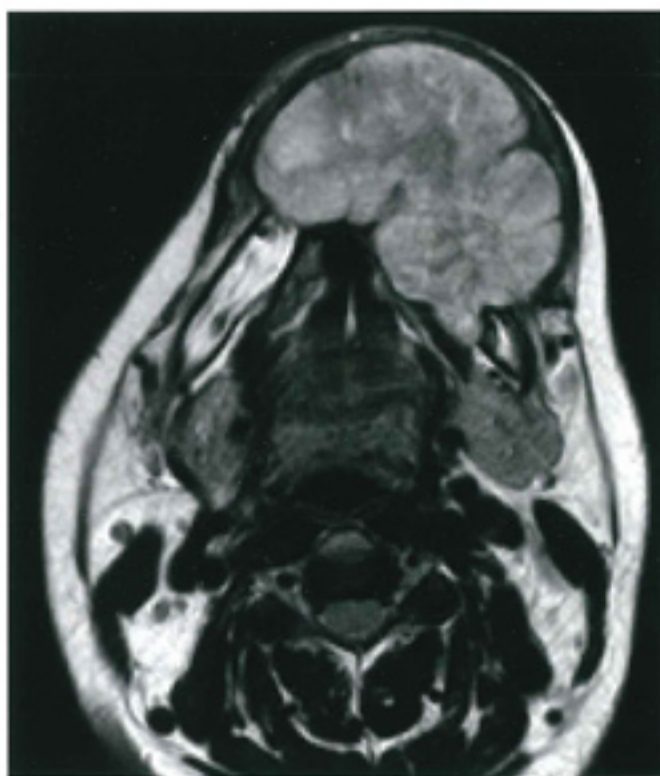




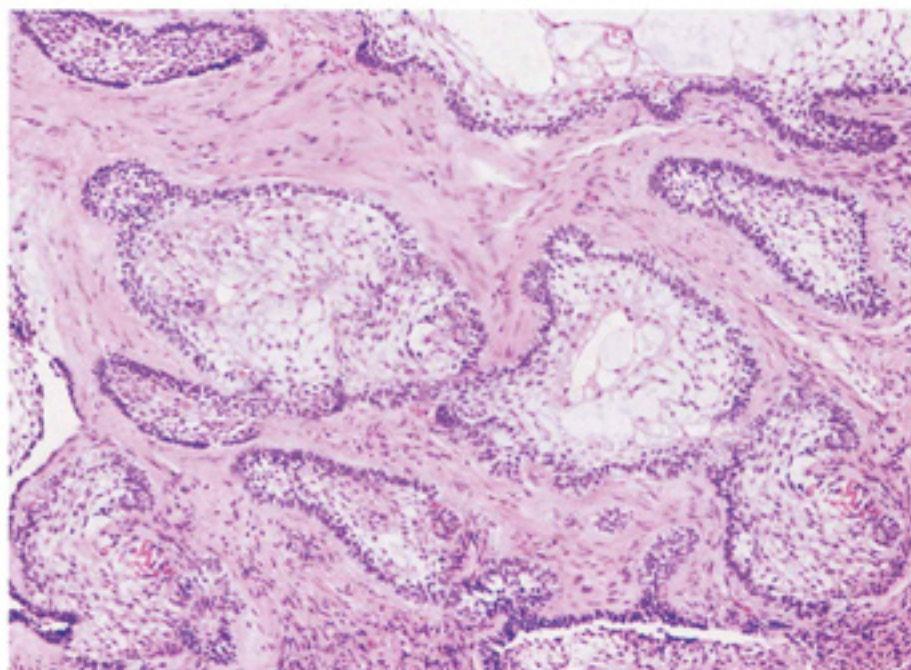
A



B



C



No. 11

(A 問題 31)

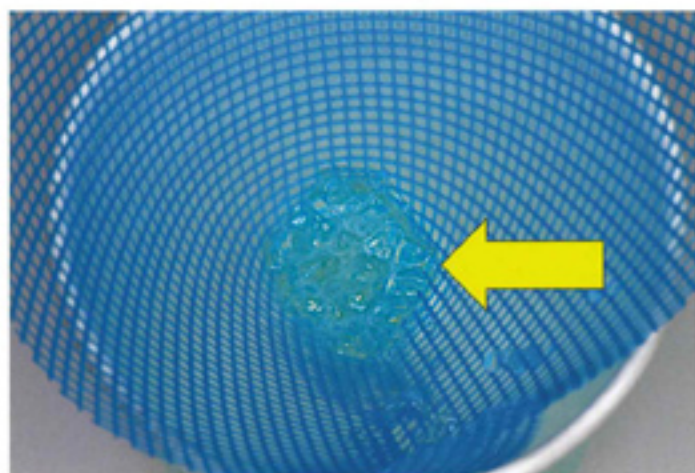
A

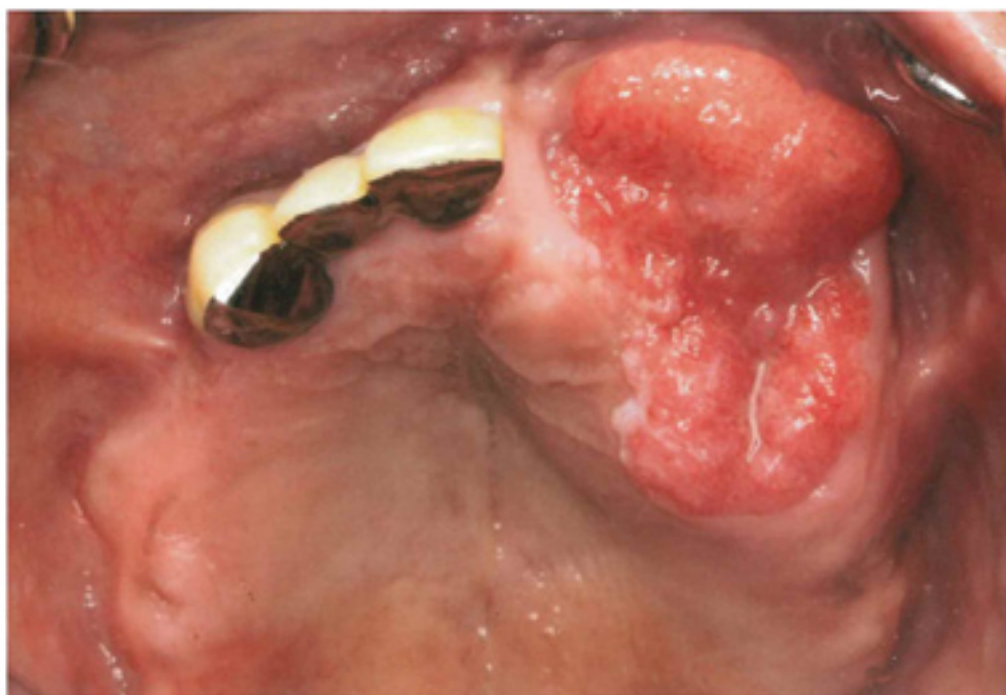


B









切除前



切除後

No. 15

(A 問題 40)

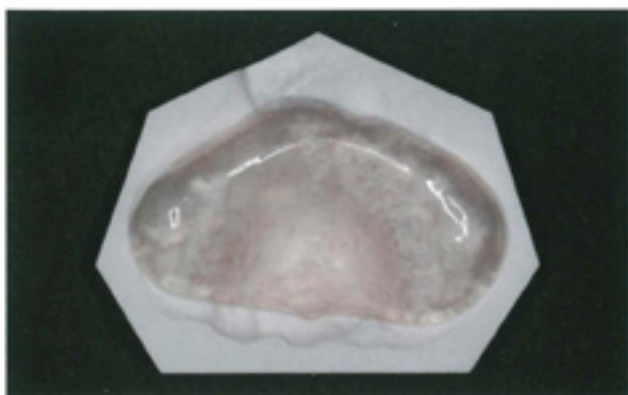
A



B



C



No. 16

(A 問題 46)



A



B



余 白

A

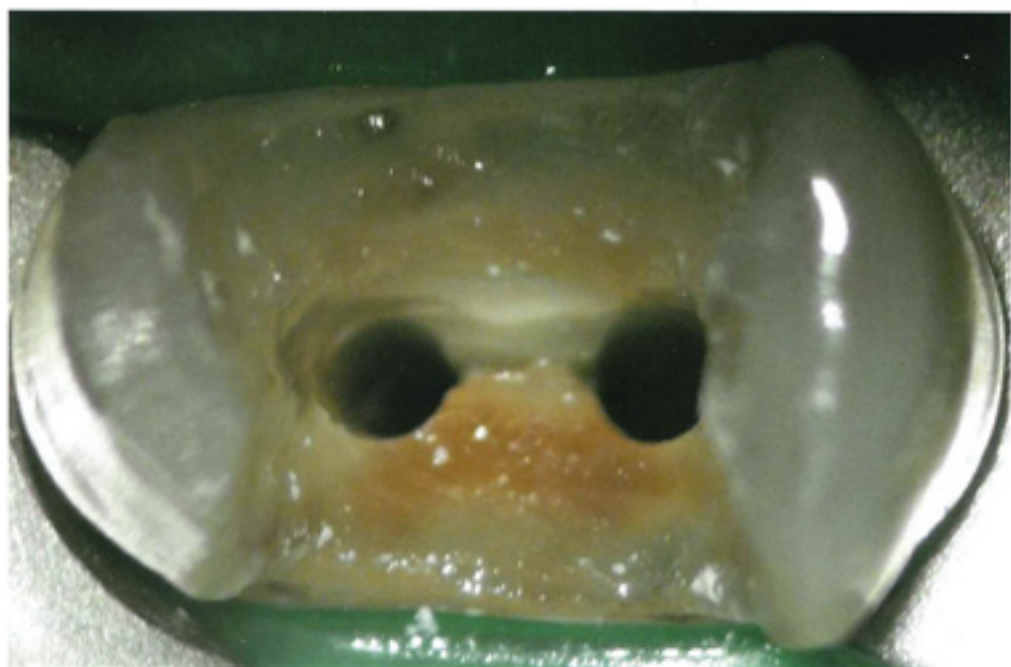


B



C





処置前



処置後

余 白

No. 20

(A 問題 54)

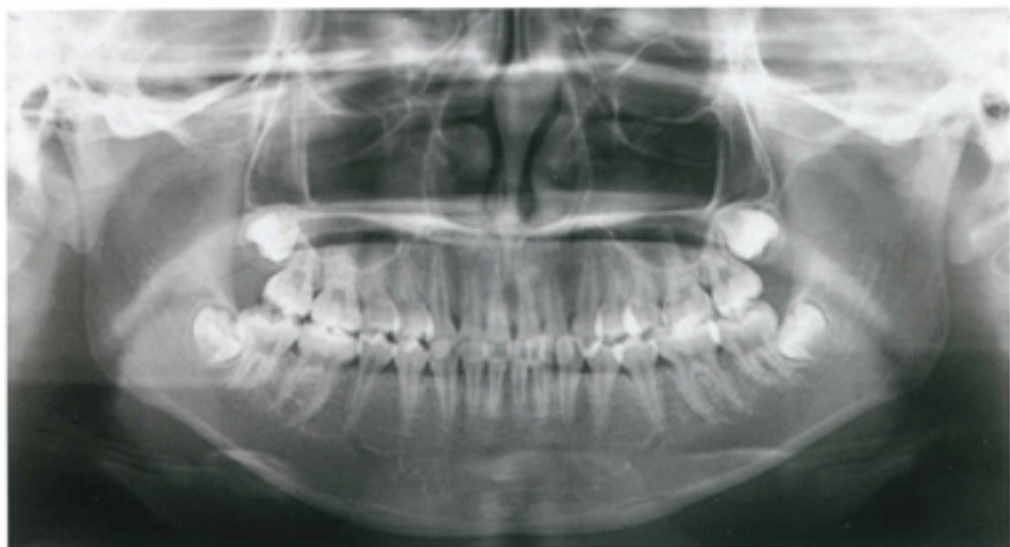
A



B



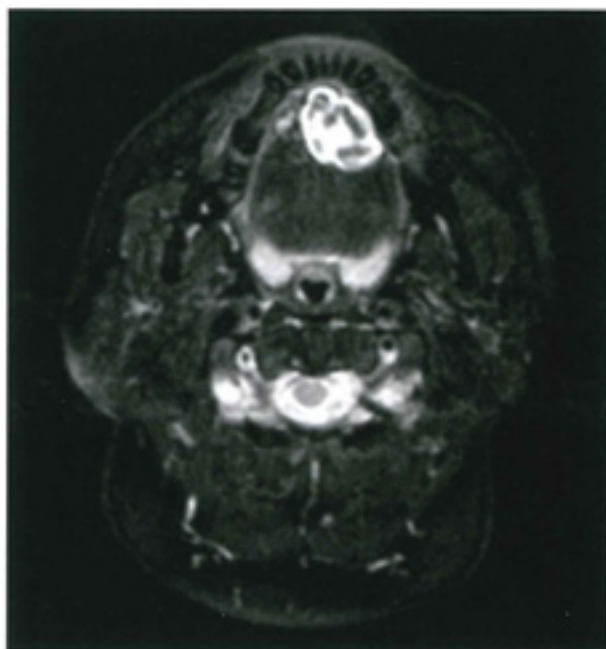
C



A



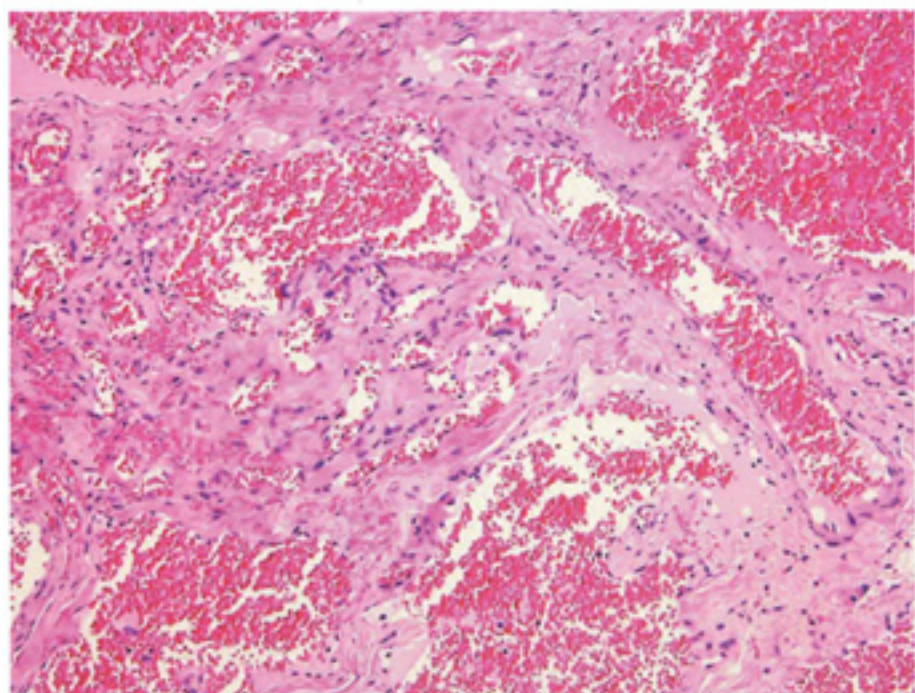
B



C



D



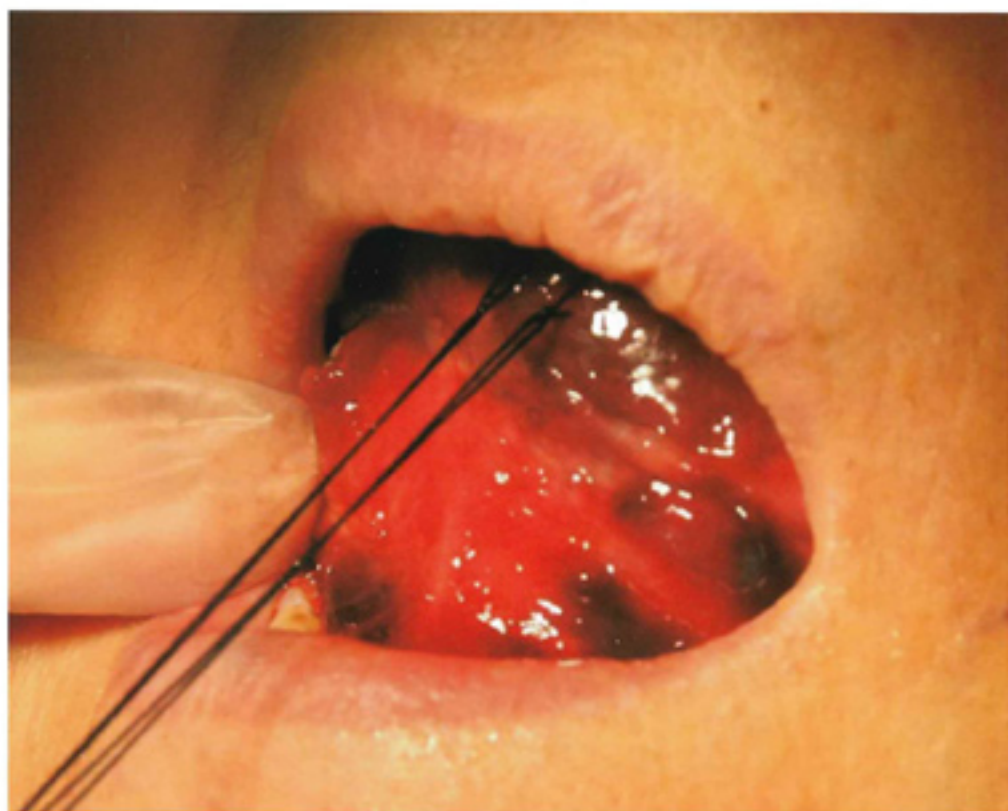


A



B





No. 25

(A 問題 65)

A



ア

イ

B
ウ

エ

オ







No. 28

(A 問題71)

A

(ミラー像)



B

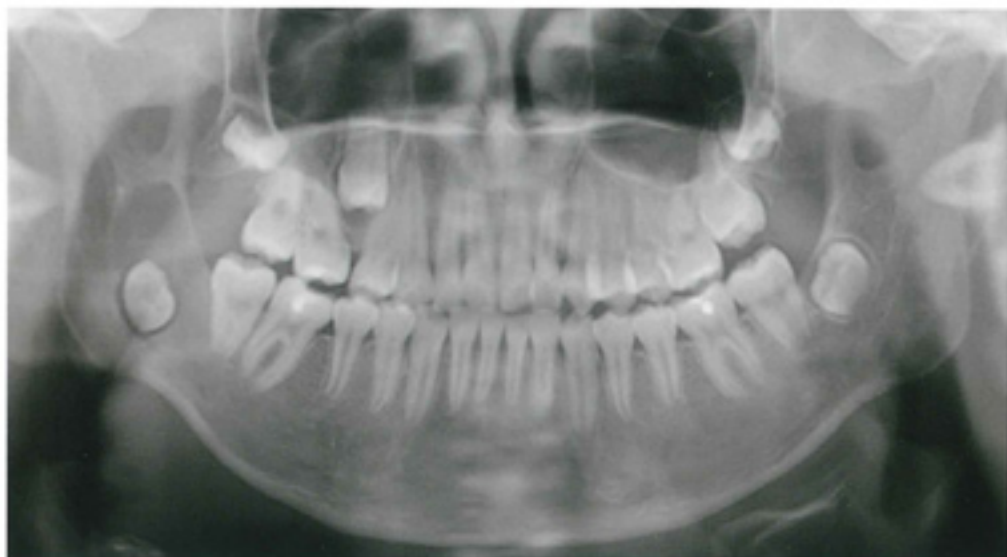


余 白

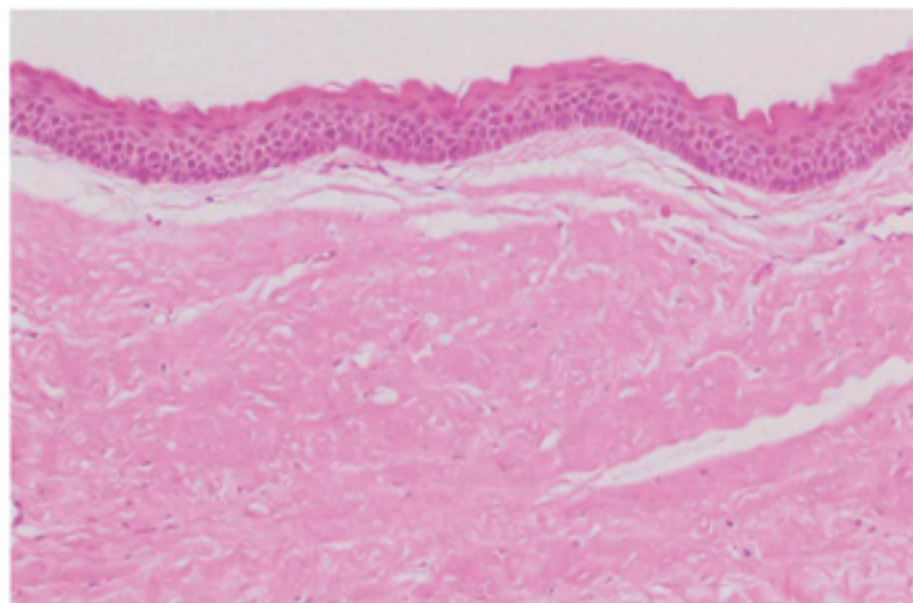
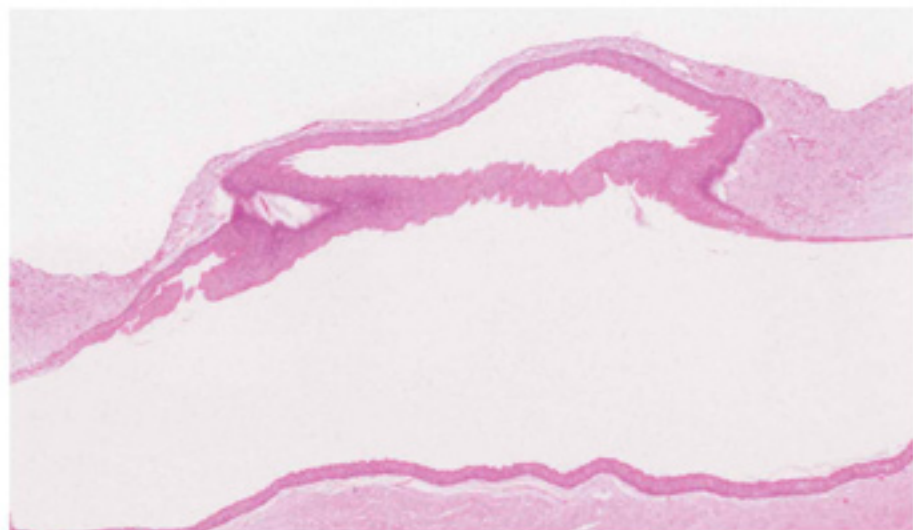
No. 29

(A 問題 72)

A



B







A



B



No. 33

(A 問題 77)

A

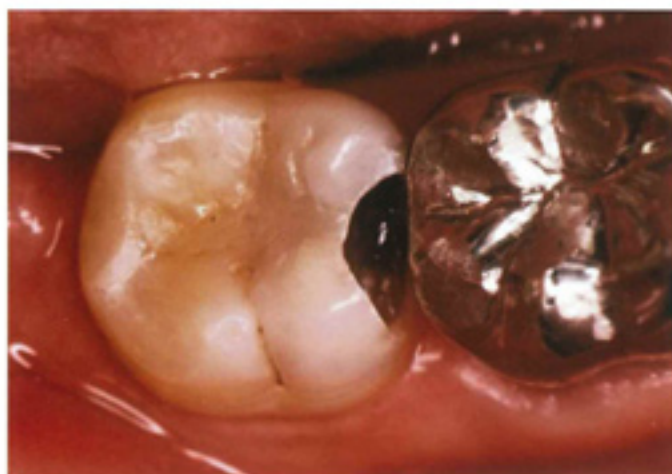


B

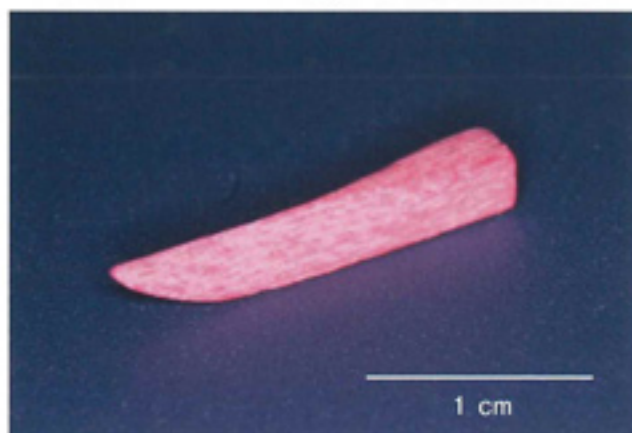




A



B



A



B



C



(ミラー像)

A



B



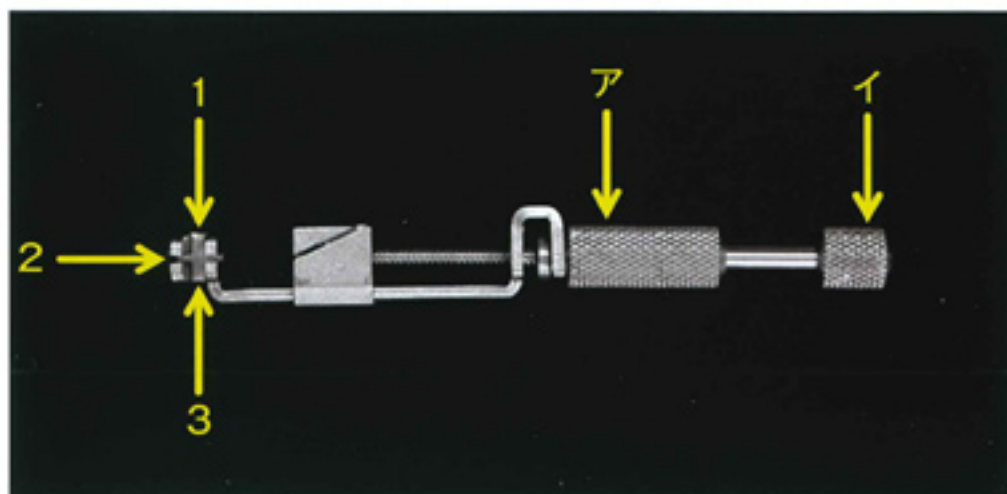
C



A



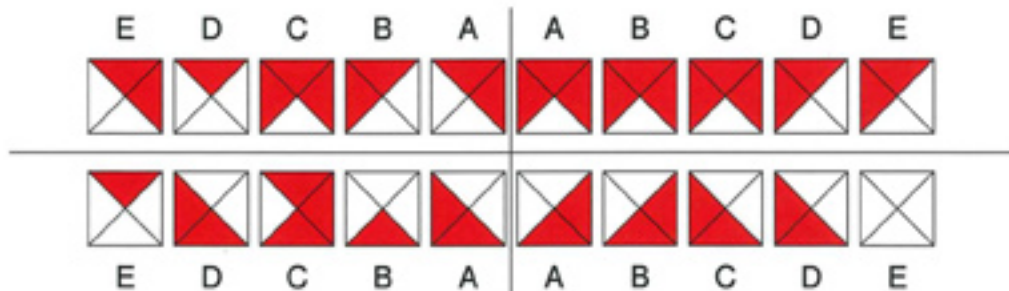
B



A



B





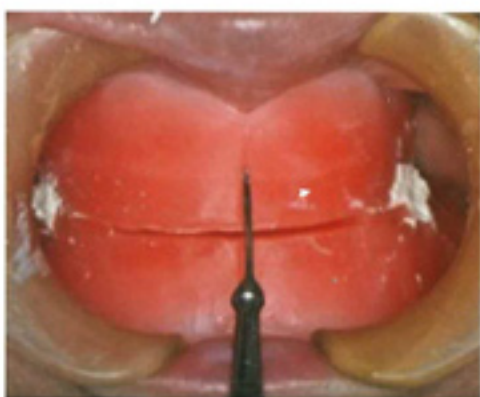
ア



イ



ウ



エ



オ

